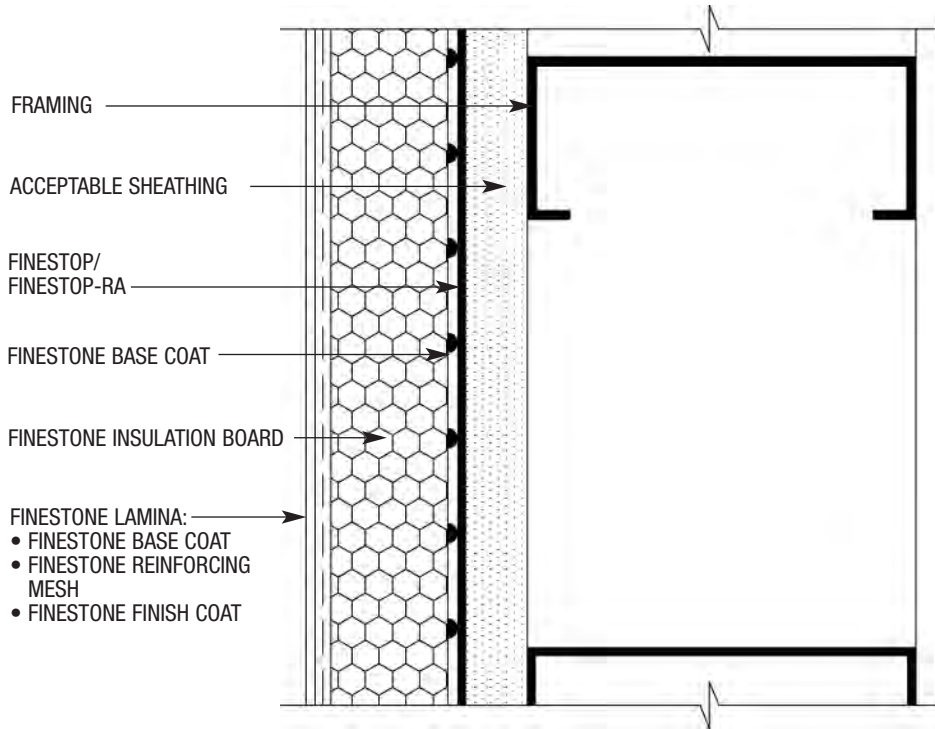


## Pebbletex DCA System

---

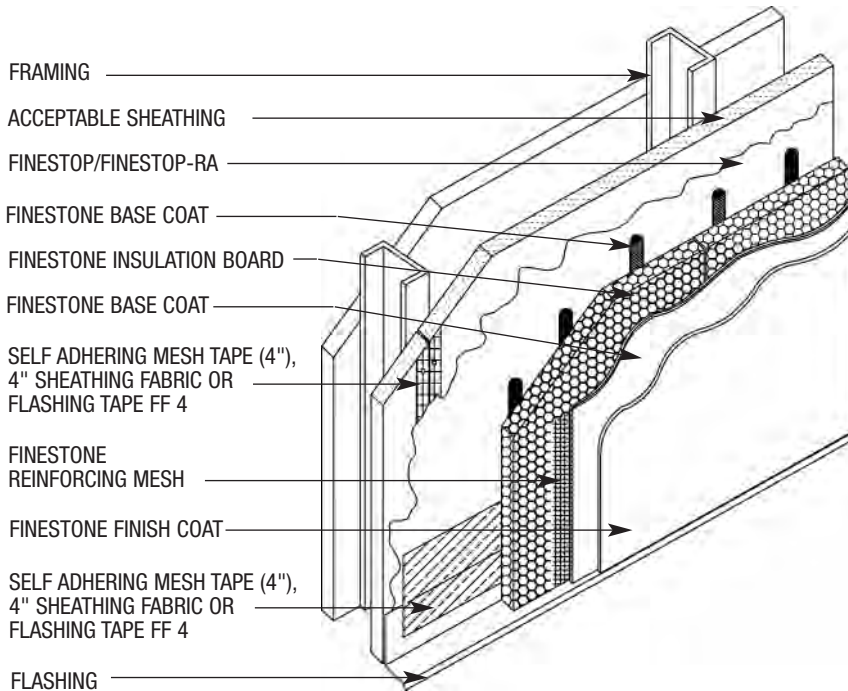


1. Pebbletex-DCA Design Application (Plan View)
2. Pebbletex-DCA Design Application (Isometric View)
3. Aesthetic Groove
4. Insulation Boards/Reinforcing Mesh Application at Openings
5. Window Head (Flush)
6. Window Head (Recessed)
7. Window Jamb (Flush) (Plan View)
8. Window Jamb (Recessed) (Plan View)
9. Window Sill (Flush)
10. Window Sill (Recessed)
11. Roof Edge Flashing
12. Metal Coping
13. Parapet Cap
14. Expansion Joint Detail at Floorline
15. Expansion Joint at Change in Substrate
16. Section at Fascia/Soffit
17. Expansion Joint
18. Pipe Penetration
19. Corner Mesh Application with STRONG 15 or HI-IMPACT 20 (Plan View)
20. Corner Mesh Application with STANDARD MESH, INTERMEDIATE 6 or 12 (Plan View)
21. Light Fixture
22. Termination at Foundation
23. Termination at Foundation (Flush)
24. Channeled Adhesive Profile
25. Kick-out Flashing

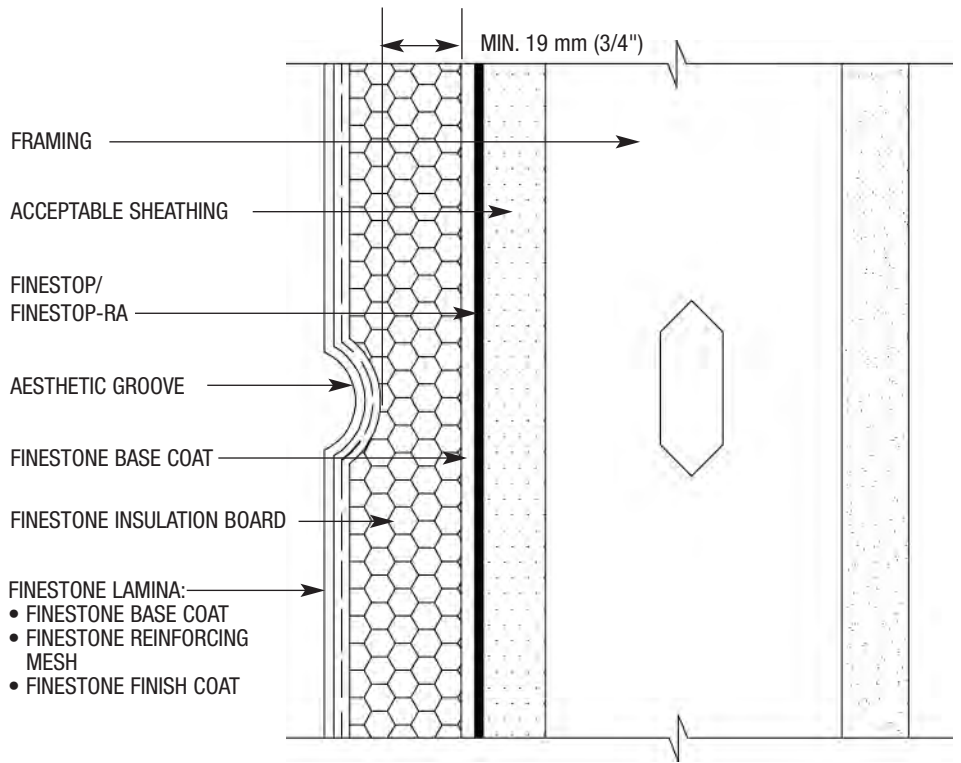


**DCA-01 TYPICAL PEBBLETEX-DCA DESIGN APPLICATION (PLAN VIEW)**

NOTE: FRAMING, ACCEPTABLE SHEATHING AND SEALANT BY OTHERS

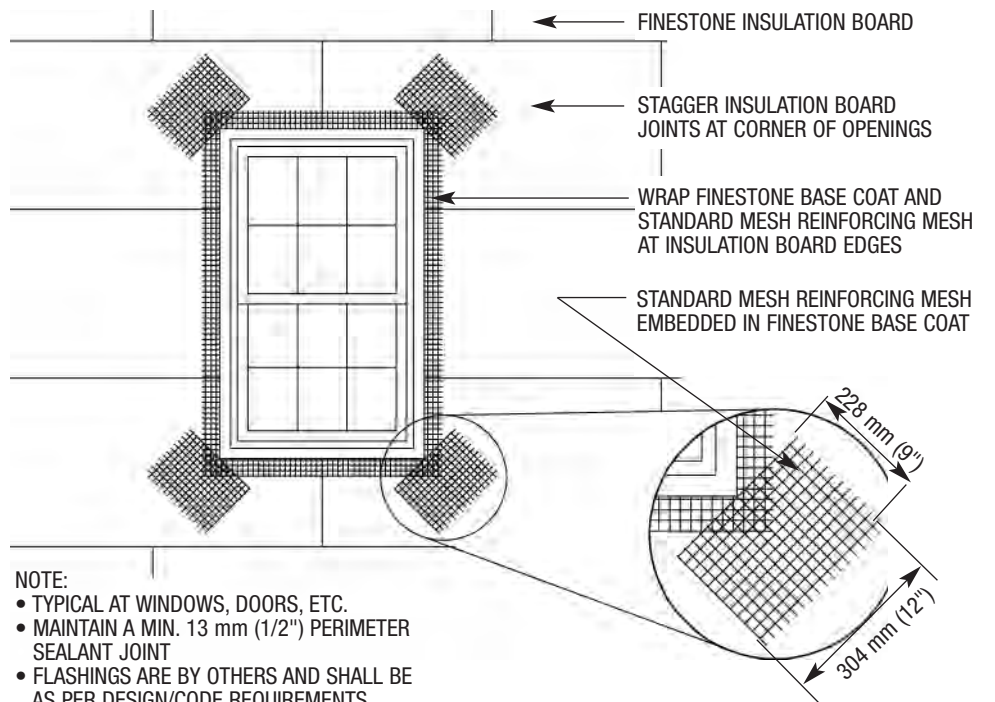


**DCA-02 TYPICAL PEBBLETEX-DCA DESIGN APPLICATION (ISOMETRIC VIEW)**

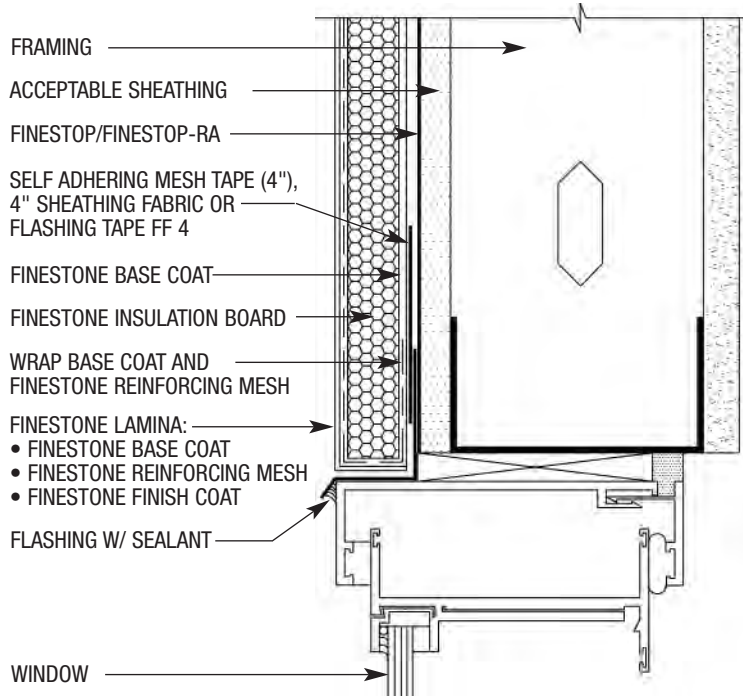


**DCA-03 TYPICAL AESTHETIC GROOVE**

NOTE: FRAMING, ACCEPTABLE SHEATHING  
AND SEALANT BY OTHERS

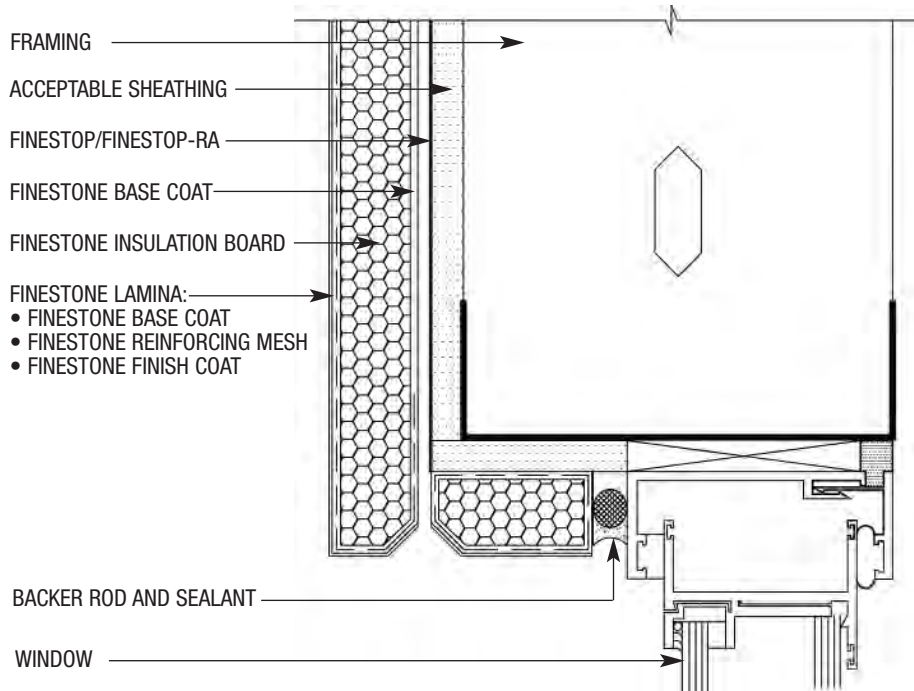


**DCA-04 TYPICAL INSULATION BOARDS/REINFORCING MESH APPLICATION AT OPENINGS**

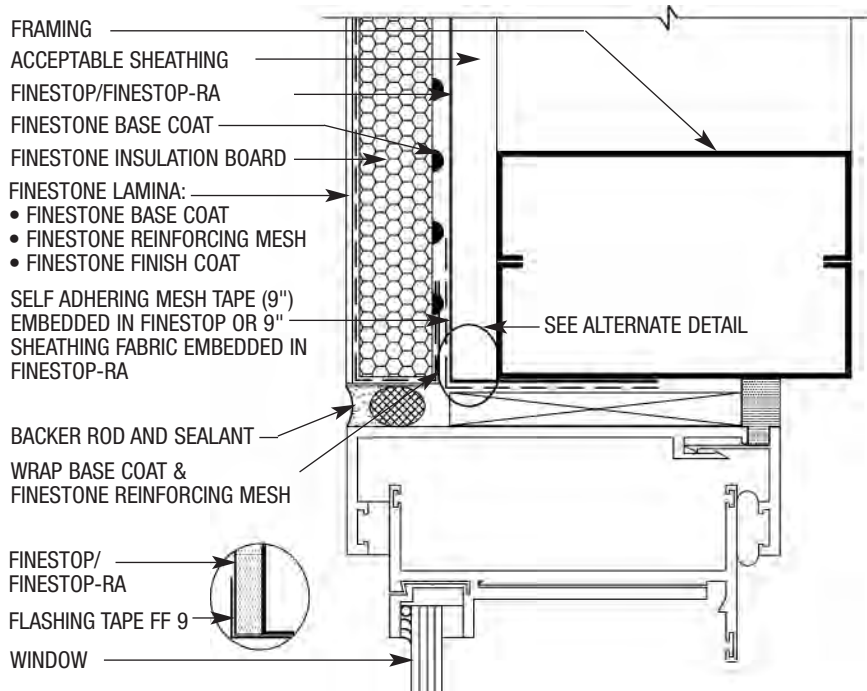


**DCA-05 TYPICAL WINDOW HEAD (FLUSH)**

NOTE: FRAMING, ACCEPTABLE SHEATHING  
AND SEALANT BY OTHERS



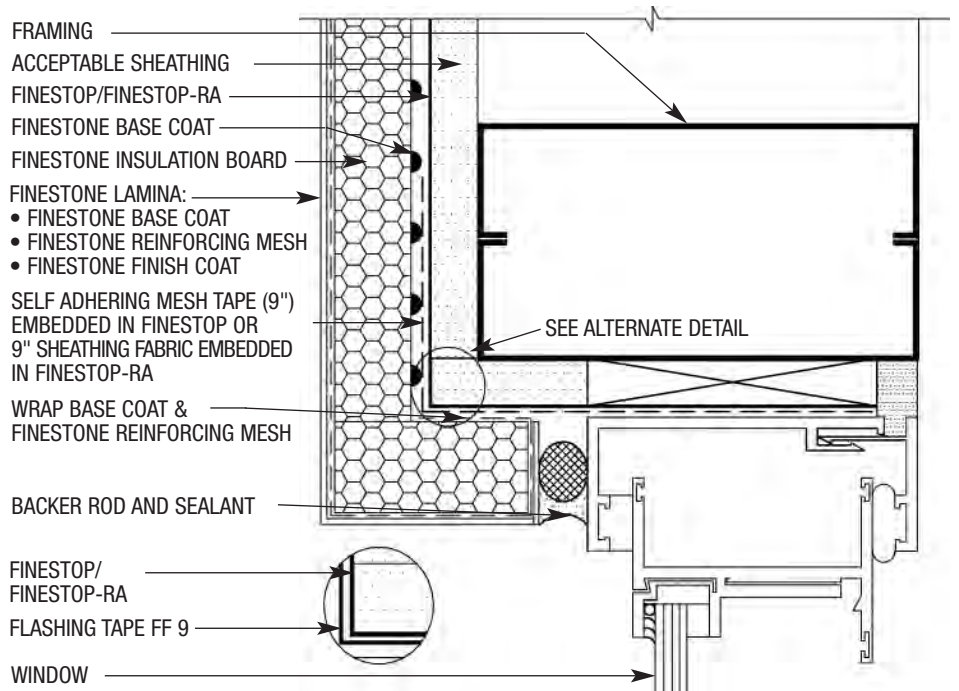
**DCA-06 TYPICAL WINDOW HEAD (RECESSED)**



ALTERNATE OPENING PROTECTION OPTION FOR WINDOW JAMB (FLASHING TAPE FF MAY BE APPLIED UNDER OR OVER FINESTOP/ FINESTOP-RA)

**DCA-07 TYPICAL WINDOW JAMB DETAIL (FLUSH) (PLAN VIEW)**

NOTE: FRAMING, ACCEPTABLE SHEATHING AND SEALANT BY OTHERS



ALTERNATE OPENING PROTECTION OPTION FOR WINDOW JAMB (FLASHING TAPE FF MAY BE APPLIED UNDER OR OVER FINESTOP/ FINESTOP-RA)

**DCA-08 TYPICAL WINDOW JAMB DETAIL (RECESSED)**

ALTERNATE OPENING PROTECTION  
OPTION FOR WINDOW SILL  
(FLASHING TAPE FF MAY BE APPLIED  
UNDER OR OVER FINESTOP/  
FINESTOP-RA)

FINESTOP/  
FINESTOP-RA  
FLASHING TAPE FF 9

BACKER ROD AND SEALANT

WRAP BASE COAT &  
FINESTONE REINFORCING MESH  
FRAMING  
ACCEPTABLE SHEATHING  
SELF ADHERING MESH TAPE (9")  
EMBEDDED IN FINESTOP OR  
9" SHEATHING FABRIC EMBEDDED  
IN FINESTOP-RA

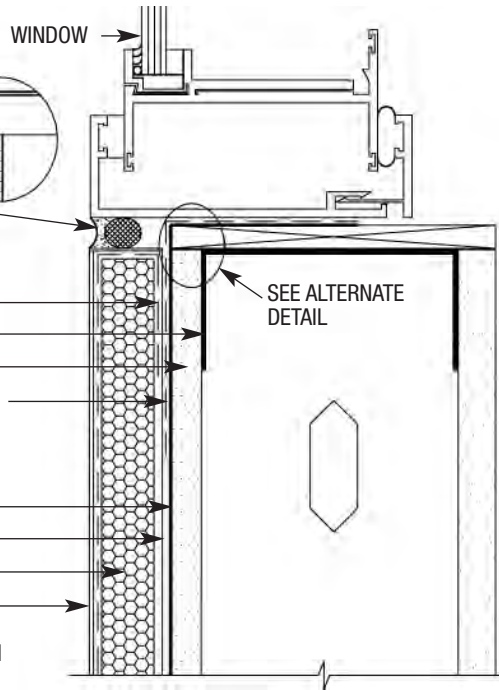
FINESTOP/FINESTOP-RA

FINESTONE BASE COAT

FINESTONE INSULATION BOARD

FINESTONE LAMINA:

- FINESTONE BASE COAT
- FINESTONE REINFORCING MESH
- FINESTONE FINISH COAT



**DCA-09 TYPICAL WINDOW SILL DETAIL (FLUSH)**

NOTE: FRAMING, ACCEPTABLE SHEATHING  
AND SEALANT BY OTHERS

ALTERNATE OPENING PROTECTION  
OPTION FOR WINDOW SILL  
(FLASHING TAPE FF MAY BE APPLIED  
UNDER OR OVER FINESTOP/  
FINESTOP-RA)

FLASHING TAPE FF 9

FINESTOP/  
FINESTOP-RA

PAN FLASHING

WRAP BASE COAT &  
FINESTONE REINFORCING MESH  
FRAMING

SEALANT

ACCEPTABLE SHEATHING

SELF ADHERING MESH TAPE (9")  
EMBEDDED IN FINESTOP OR  
9" SHEATHING FABRIC EMBEDDED  
IN FINESTOP-RA

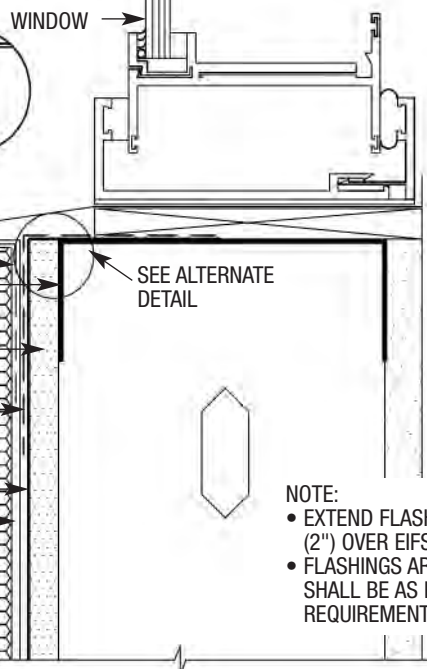
FINESTOP/FINESTOP-RA

FINESTONE BASE COAT

FINESTONE INSULATION BOARD

FINESTONE LAMINA:

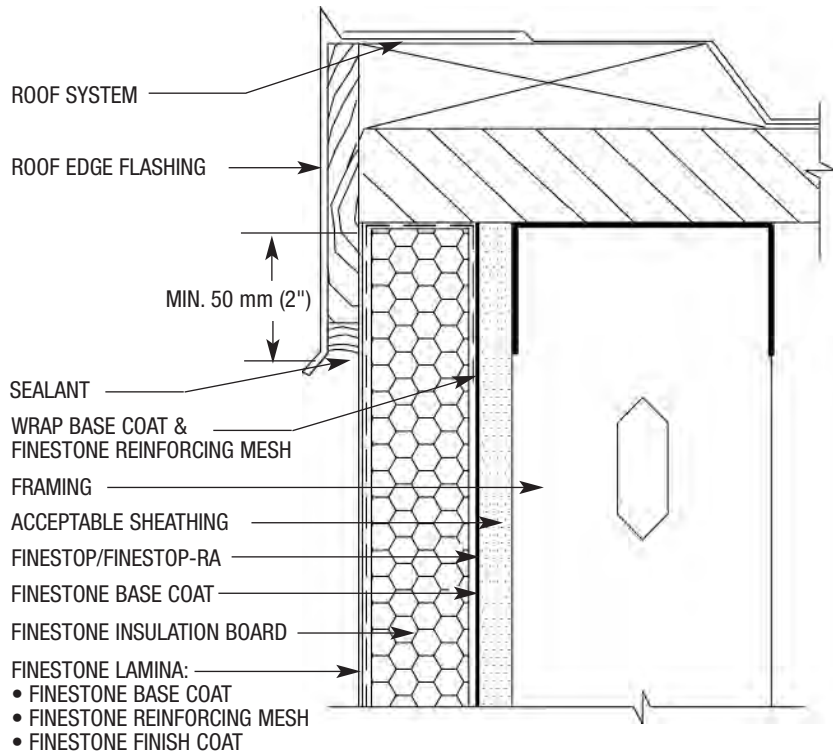
- FINESTONE BASE COAT
- FINESTONE REINFORCING MESH
- FINESTONE FINISH COAT



NOTE:

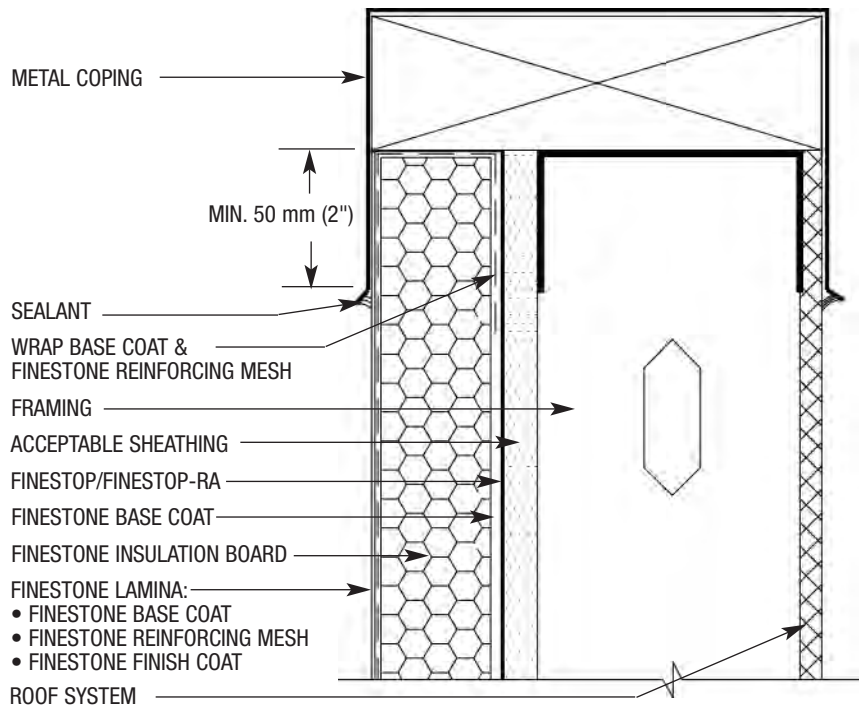
- EXTEND FLASHING MIN. 50 mm (2") OVER EIFS
- FLASHINGS ARE BY OTHERS AND SHALL BE AS PER DESIGN/CODE REQUIREMENTS

**DCA-10 TYPICAL WINDOW SILL DETAIL (RECESSED)**



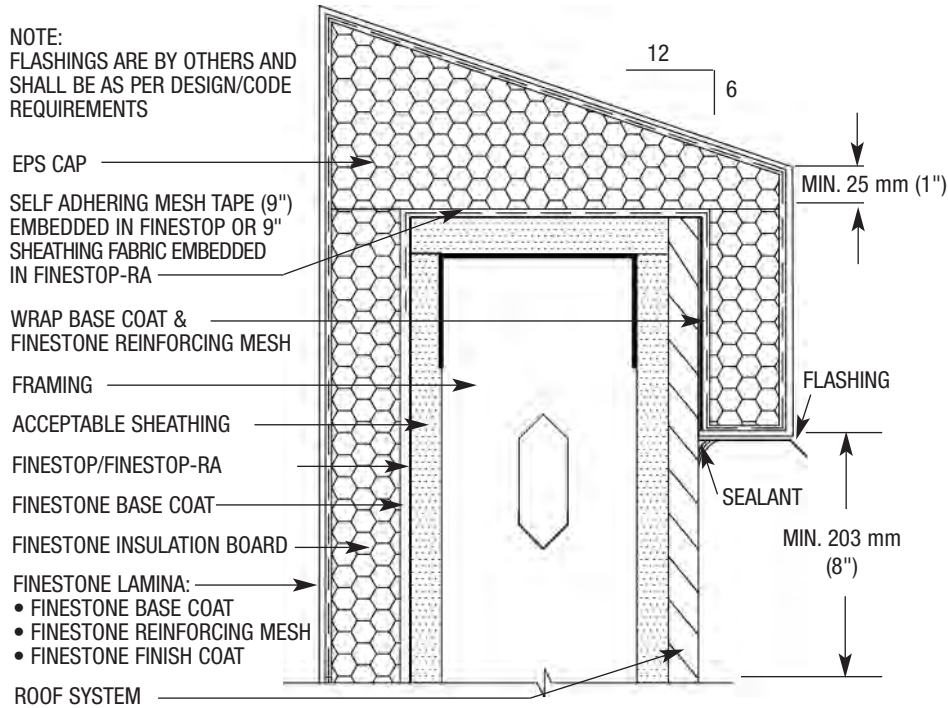
**DCA-11 TYPICAL ROOF EDGE FLASHING DETAIL**

NOTE: FRAMING, ACCEPTABLE SHEATHING AND SEALANT BY OTHERS



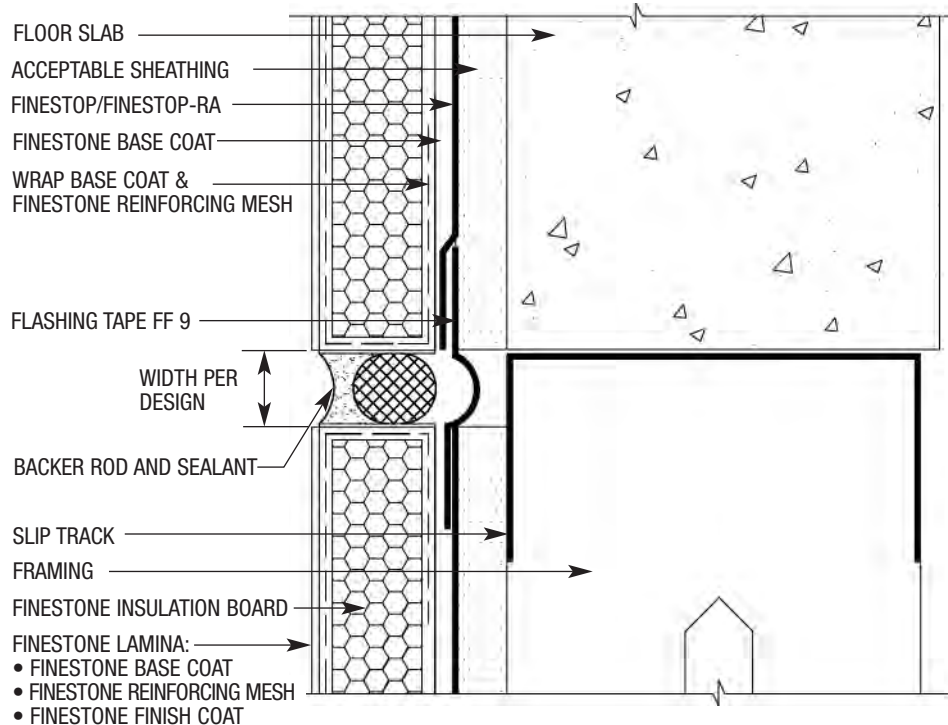
**DCA-12 TYPICAL METAL COPING DETAIL**

NOTE:  
FLASHINGS ARE BY OTHERS AND  
SHALL BE AS PER DESIGN/CODE  
REQUIREMENTS

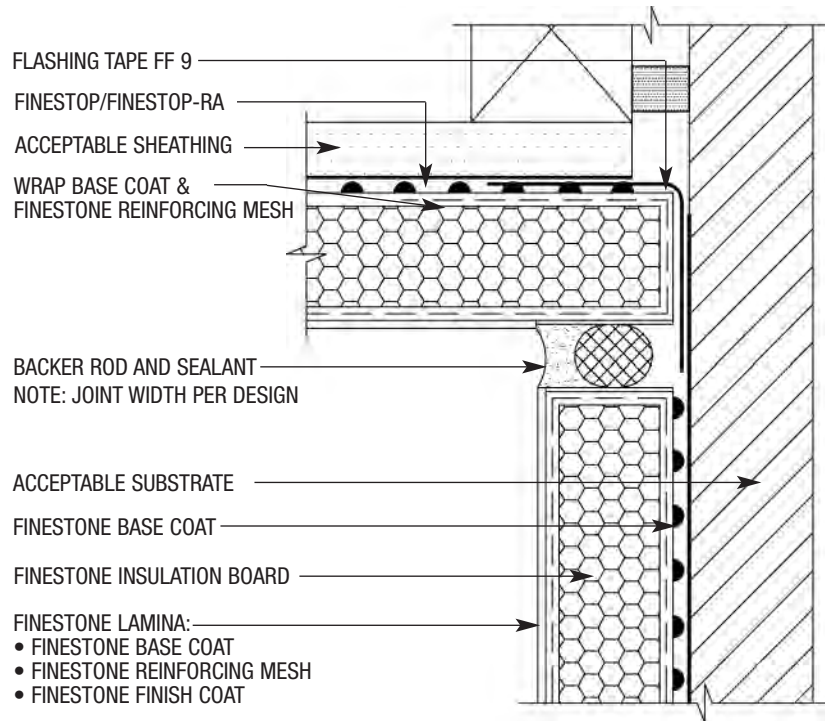


**DCA-13 TYPICAL PARAPET CAP DETAIL**

NOTE: FRAMING, ACCEPTABLE SHEATHING  
AND SEALANT BY OTHERS

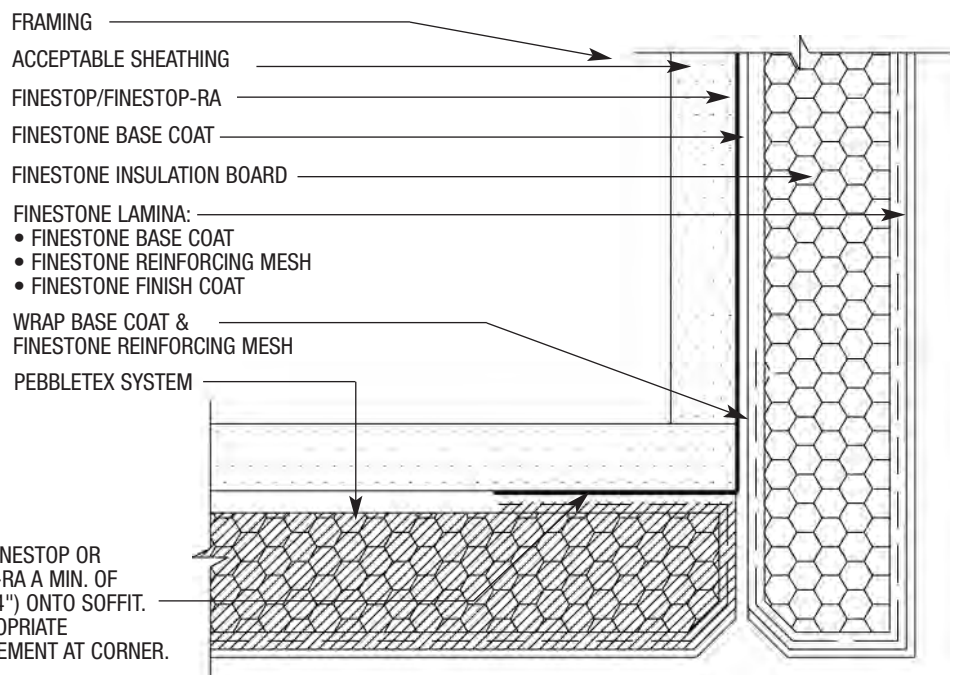


**DCA-14 TYPICAL EXPANSION JOINT DETAIL AT FLOORLINE**



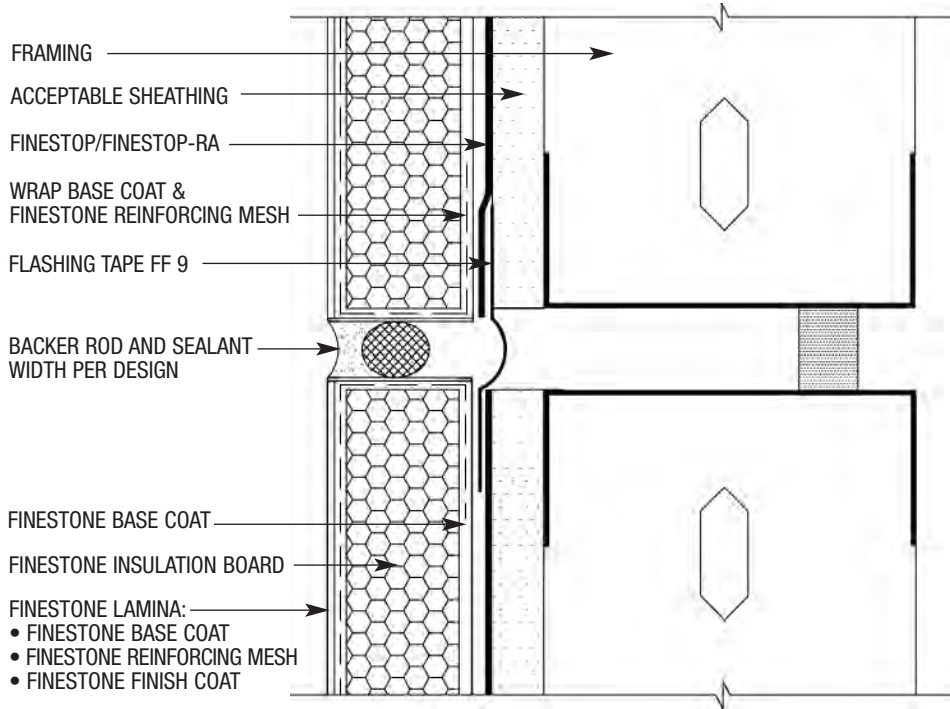
**DCA-15 TYPICAL EXPANSION JOINT AT CHANGE IN SUBSTRATE**

NOTE: FRAMING, ACCEPTABLE SHEATHING AND SEALANT BY OTHERS



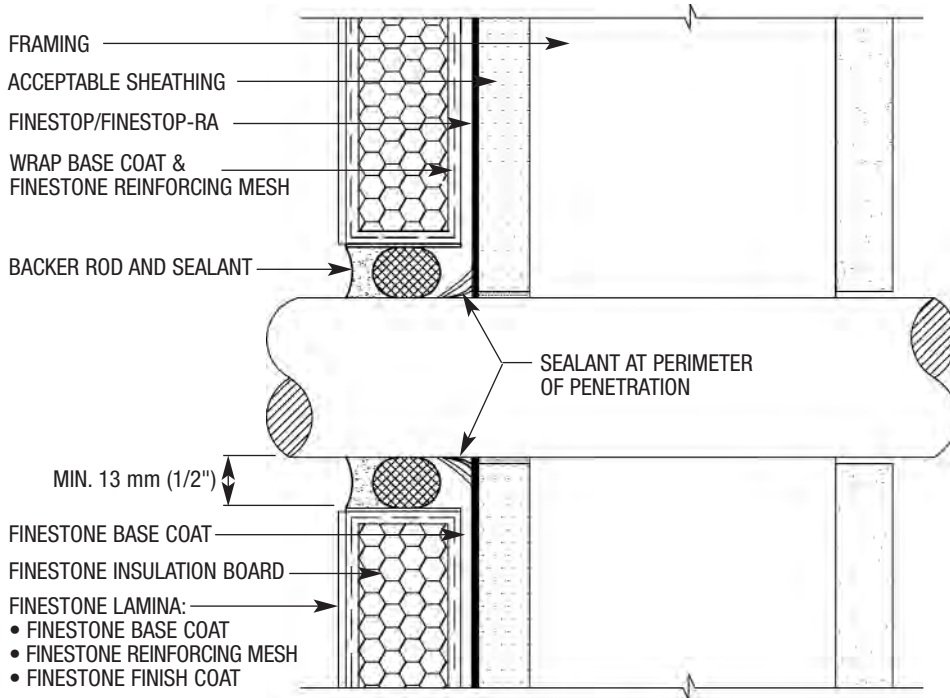
NOTE:  
 EXTEND FINESTOP OR  
 FINESTOP-RA A MIN. OF  
 102 mm (4") ONTO SOFFIT.  
 USE APPROPRIATE  
 REINFORCEMENT AT CORNER.

**DCA-16 TYPICAL SECTION AT FASCIA/SOFFIT**



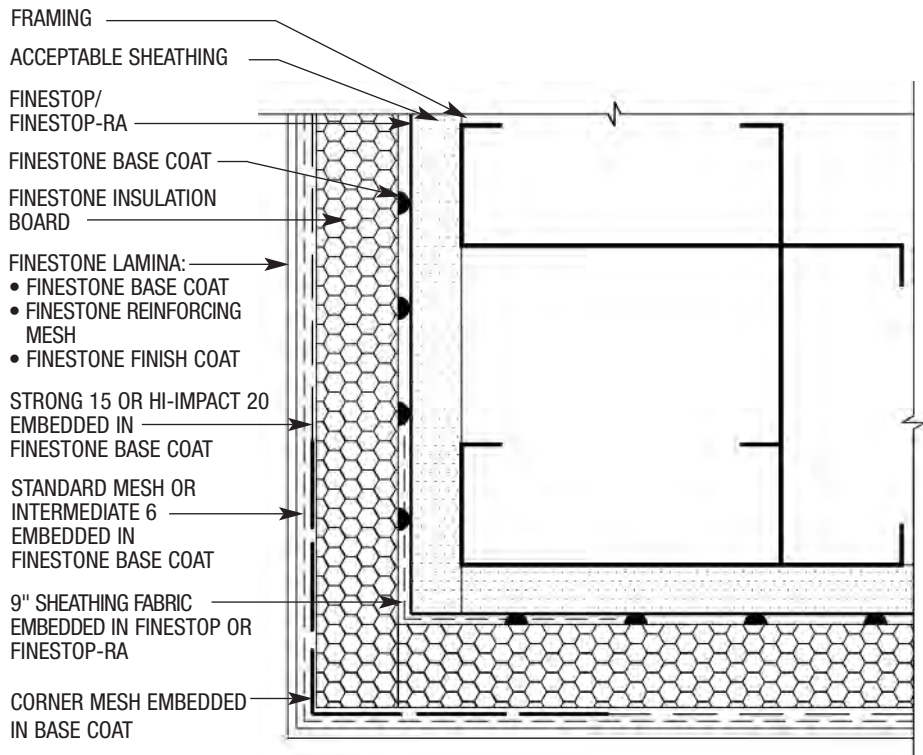
**DCA-17 TYPICAL EXPANSION JOINT DETAIL**

NOTE: FRAMING, ACCEPTABLE SHEATHING AND SEALANT BY OTHERS



**DCA-18 TYPICAL PIPE PENETRATION**

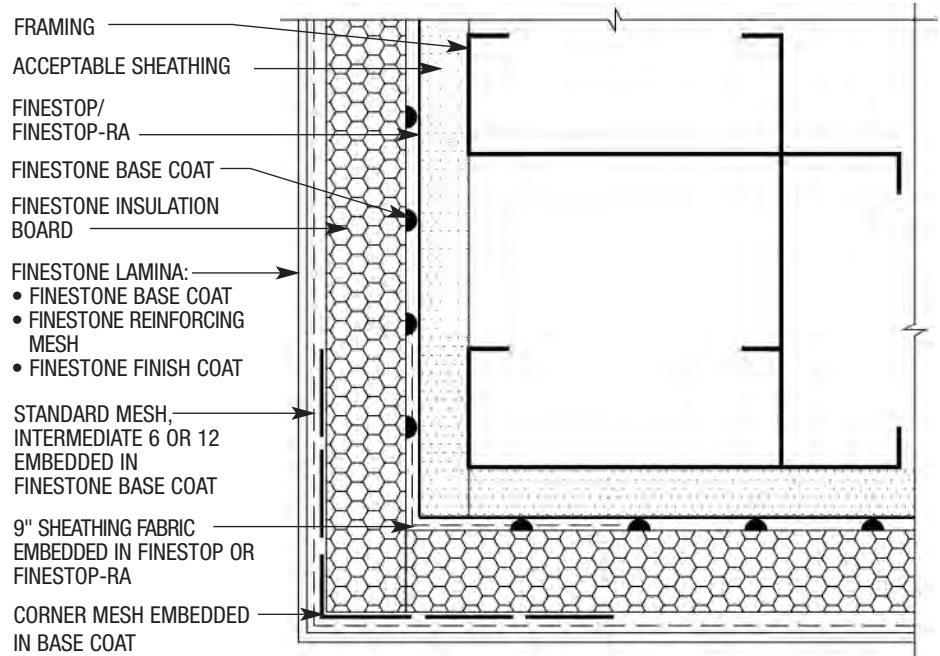
- NOTE:
- BUTT EDGE OF STRONG 15 OR HI-IMPACT 20 TO CORNER MESH
  - A CONTINUOUS OVERLAY OF STANDARD MESH OR INTERMEDIATE 6 IS REQUIRED OVER STRONG 15, HI-IMPACT 20 OR CORNER MESH



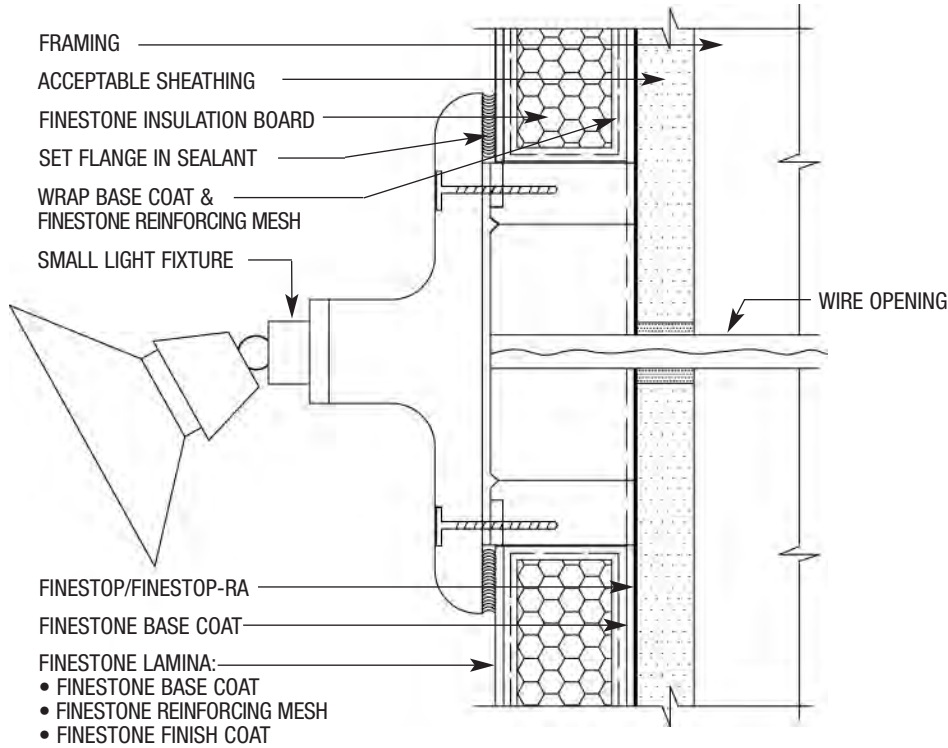
NOTE: FRAMING, ACCEPTABLE SHEATHING AND SEALANT BY OTHERS

**DCA-19 TYPICAL CORNER MESH APPLICATION WITH STRONG 15 OR HI-IMPACT 20 (PLAN VIEW)**

- NOTE:
- A CONTINUOUS OVERLAY OF STANDARD MESH, INTERMEDIATE 6 OR 12 IS REQUIRED OVER CORNER MESH

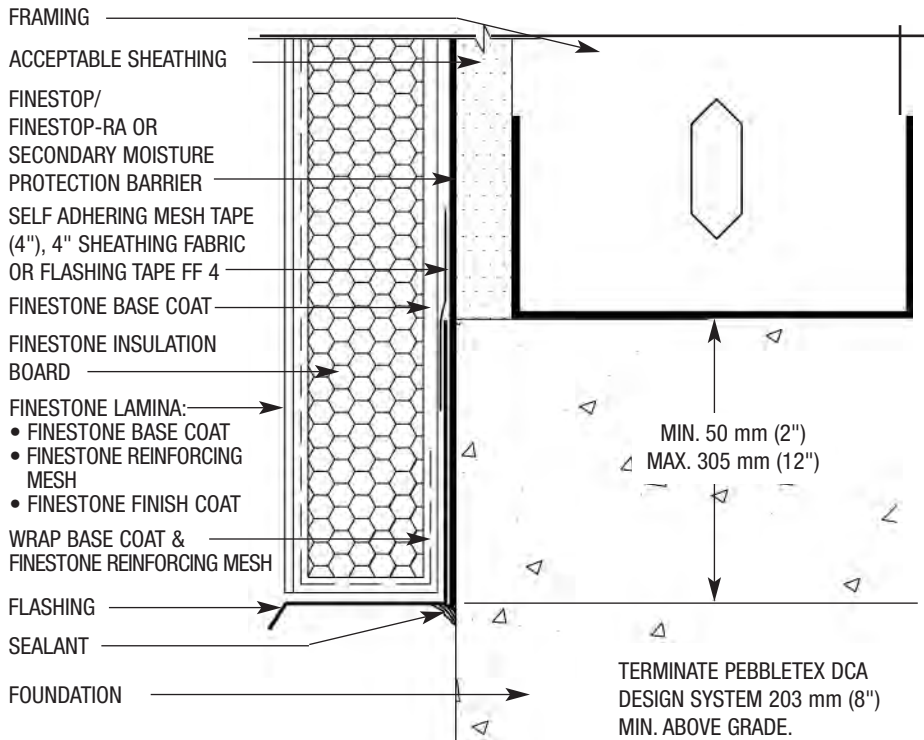


**DCA-20 TYPICAL CORNER MESH APPLICATION WITH STANDARD MESH, INTERMEDIATE 6 OR 12 (PLAN VIEW)**

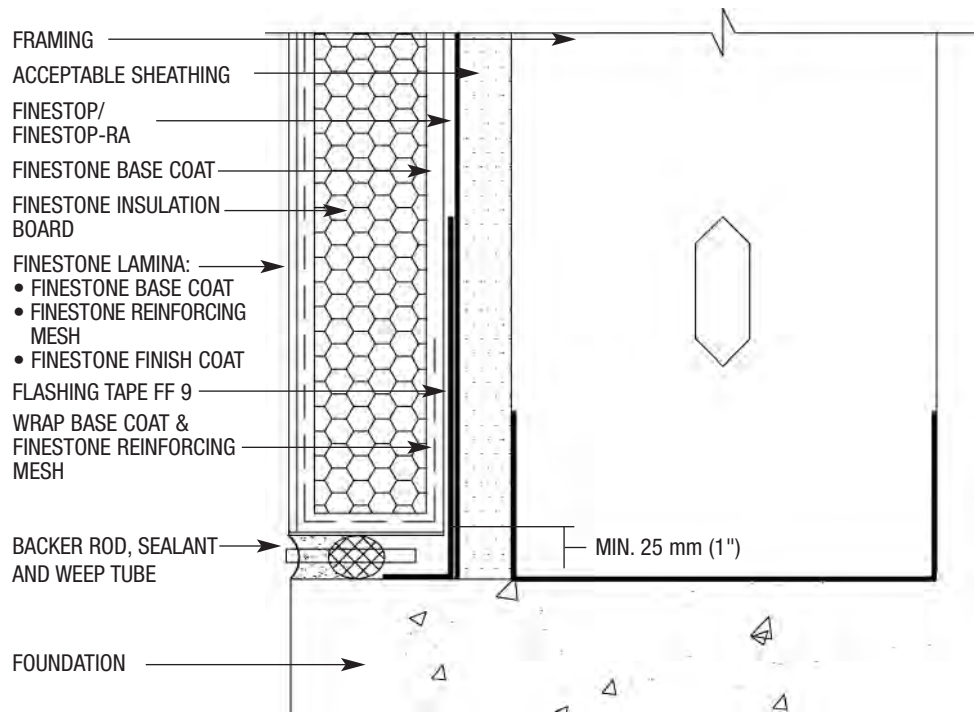


**DCA-21 TYPICAL LIGHT FIXTURE**

NOTE: FRAMING, ACCEPTABLE SHEATHING AND SEALANT BY OTHERS

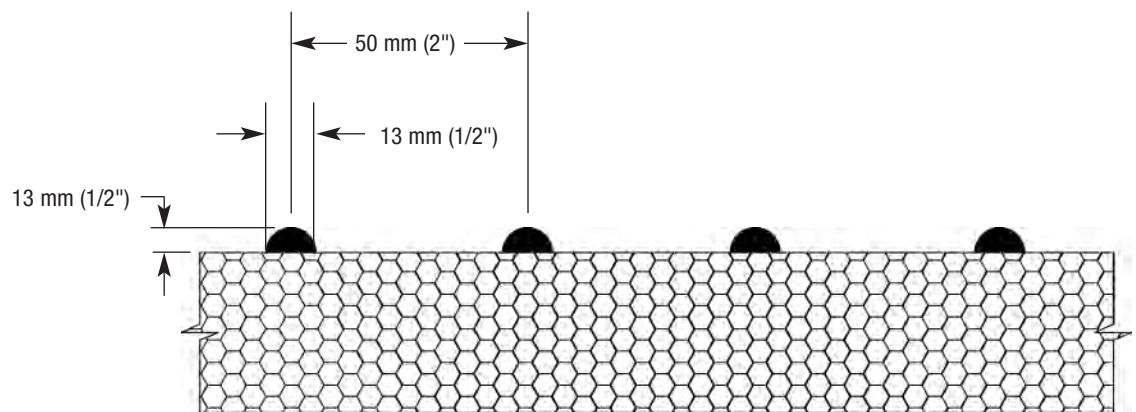


**DCA-22 TYPICAL TERMINATION AT FOUNDATION**

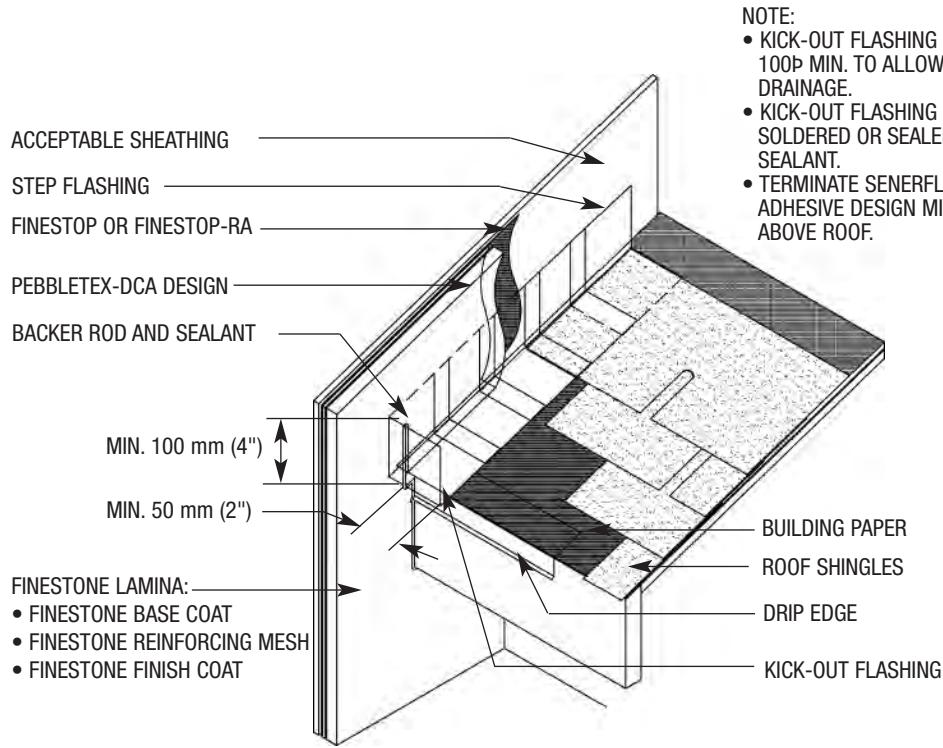


**DCA-23 TYPICAL TERMINATION AT FOUNDATION (FLUSH)**

NOTE: FRAMING, ACCEPTABLE SHEATHING AND SEALANT BY OTHERS



**DCA-24 TYPICAL CHANNELED ADHESIVE PROFILE**



**NOTE:**

- KICK-OUT FLASHING MUST BE ANGLED 100P MIN. TO ALLOW FOR PROPER DRAINAGE.
- KICK-OUT FLASHING SEAMS MUST BE SOLDERED OR SEALED WITH APPROPRIATE SEALANT.
- TERMINATE SENERFLEX CHANNELED ADHESIVE DESIGN MIN. 50 mm (2") ABOVE ROOF.

**DCA-25 TYPICAL KICK-OUT FLASHING DETAIL**

NOTE: FRAMING, ACCEPTABLE SHEATHING AND SEALANT BY OTHERS

## **GENERAL NOTES**

BASF Wall Systems is an operating unit of BASF Construction Chemicals, LLC. (herein after referred to as "BASF Wall Systems") These details are presented in good faith by BASF Wall Systems and represent typical and/or general conditions. They are offered as a guide for consideration to assist the designer, specifier, installer and/or owner. The responsibility remains with the user for the design of any system. For conditions not shown, consult BASF Wall Systems for specific recommendations. Consult current FINESTONE technical bulletins for such information as acceptable sealants, insulation attachment methods, installation of air/weather barriers, residential policy, code and test reports, geo-climatic considerations, etc. Installation requirements for sealant (joint size configuration, primers, bond breakers) shall be in accordance with sealant manufacturer's specifications and instructions.

## **TECHNICAL SUPPORT**

Consult the BASF Wall Systems Technical Services Department for specific recommendations concerning all other applications. Consult the FINESTONE website, [www.finestone.basf.com](http://www.finestone.basf.com), for additional information about products and systems and for updated literature.

## **RESIDENTIAL POLICY**

On one- and two-family residential framed construction, BASF Wall Systems requires that the wall system selected be one that includes provisions for moisture drainage. The choices include Pebbletex D line of drainage EIFS, FINESTONE Stucco Systems and Finescreen Cement Board Stucco Systems. There are no exceptions to this policy. Under no circumstances will FINESTONE warrant the use of any other system on this type of construction without expressed written authorization from FINESTONE. [Residential construction using EIFS on masonry (CMU) or poured concrete does not require the additional water management provisions described above.] Consult BASF Wall Systems' Technical Service Department for specific recommendations concerning all other applications.

## **DISCLAIMER**

This information and all further technical advice are based on BASF Wall Systems' present knowledge and experience. However, BASF assumes no liability for providing such information and advice including the extent to which such information and advice may relate to existing third party intellectual property rights, especially patent rights. In particular, BASF Wall Systems disclaims any and all CONDITIONS AND WARRANTIES, WHETHER EXPRESS OR IMPLIED, INCLUDING THE IMPLIED WARRANTIES OF FITNESS FOR A PARTICULAR PURPOSE OR MERCHANTABILITY. BASF WALL SYSTEMS SHALL NOT BE RESPONSIBLE FOR CONSEQUENTIAL, INDIRECT OR INCIDENTAL DAMAGES (INCLUDING LOSS OF PROFITS) OF ANY KIND. BASF Wall Systems reserves the right to make any changes according to technological progress or further developments. It is the customer's responsibility and obligation to carefully inspect and test any incoming goods. Performance of the product(s) described herein should be verified by testing and carried out only by qualified experts. It is the sole responsibility of the customer to carry out and arrange for any such testing. Reference to trade names used by other companies is neither a recommendation, nor an endorsement of any product and does not imply that similar products could not be used.

**BASF Wall Systems**

3550 St. Johns Bluff Road South  
Jacksonville, FL 32224-2614  
Phone 800 • 221 • 9255  
Fax 904 • 996 • 6300  
[www.finestone.basf.com](http://www.finestone.basf.com)