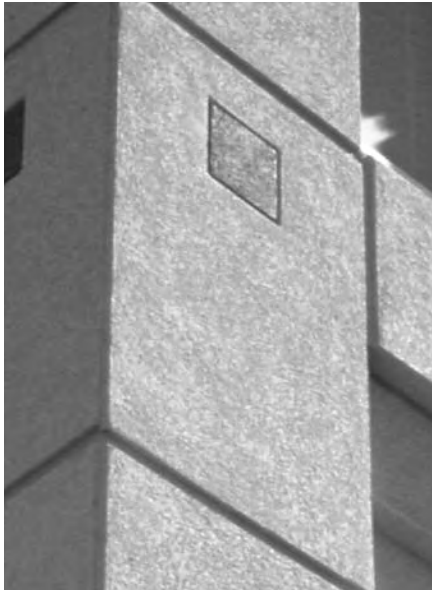
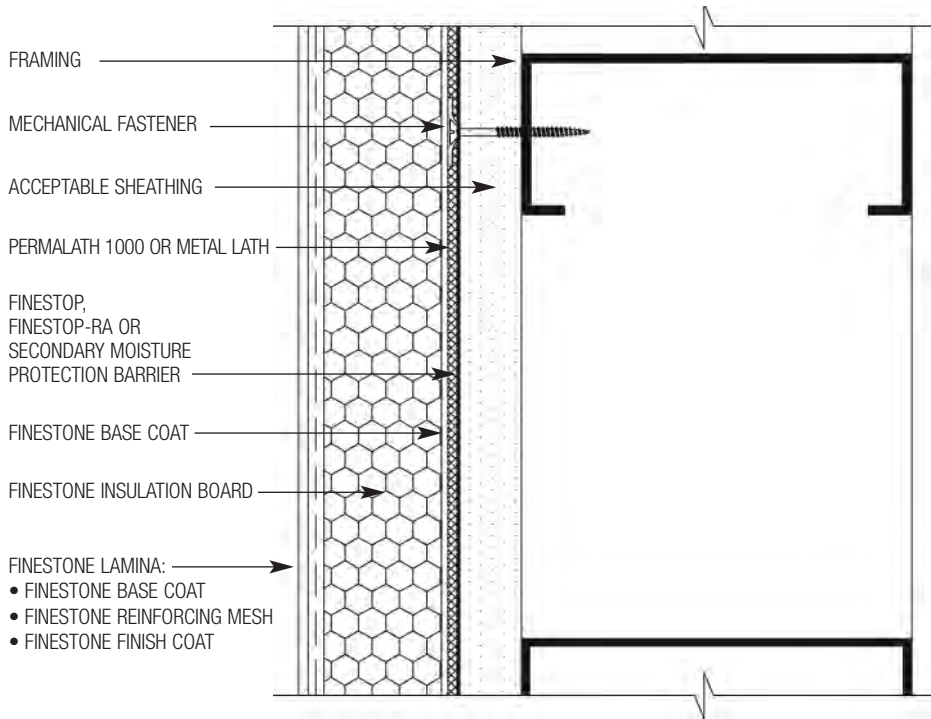


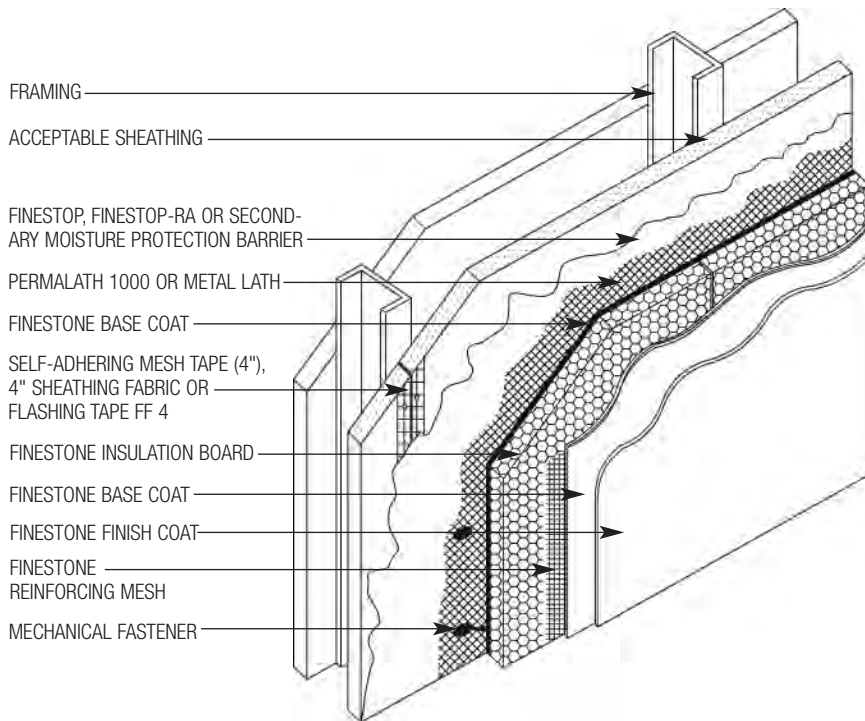
Pebbletex-D10 System



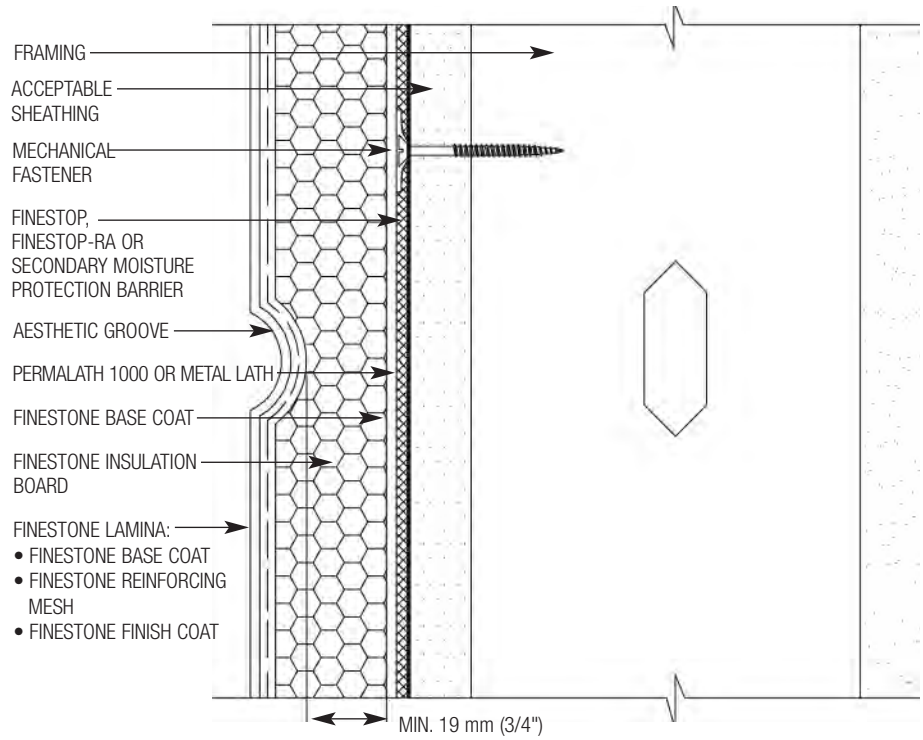
1. Pebbletex-D10 Application (Plan View)
2. Pebbletex-D10 Design (Isometric View)
3. Aesthetic Groove
4. Insulation Boards / Reinforcing Mesh Application at Openings
5. Window Head (Flush)
6. Window Head (Recessed)
7. Window Jamb Detail (Flush)
8. Window Jamb Detail (Recessed)
9. Window Sill Detail (Flush)
10. Window Sill Detail (Recessed)
11. Roof Edge Flashing Detail
12. Metal Coping Detail
13. Parapet Cap Detail
14. Expansion Joint Detail at Floorline
15. Expansion Joint at Change in Substrate
16. Section at Fascia/Soffit
17. Expansion Joint Detail
18. Pipe Penetration
19. Corner Mesh Application with STRONG 15 or HI-IMPACT 20 (Plan View)
20. Corner Mesh Application with FLEXGUARD 4, INTERMEDIATE 6 or 12 (Plan View)
21. Light Fixture
22. Termination at Foundation
23. Termination at Foundation (Flush)
24. Kick-out Flashing Detail



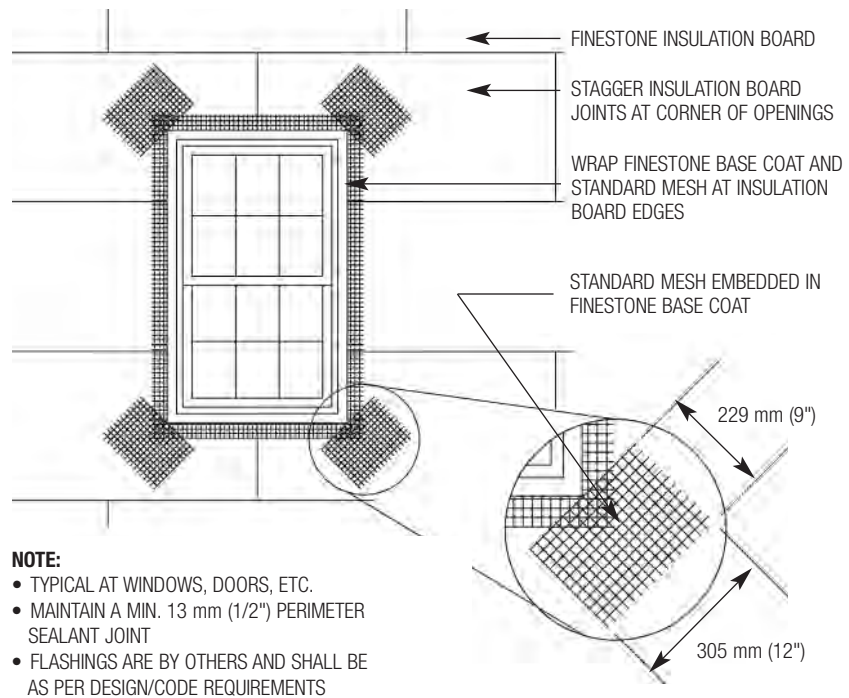
**PDT-01 TYPICAL PEBBLETEX-D10 APPLICATION
(PLAN VIEW)**



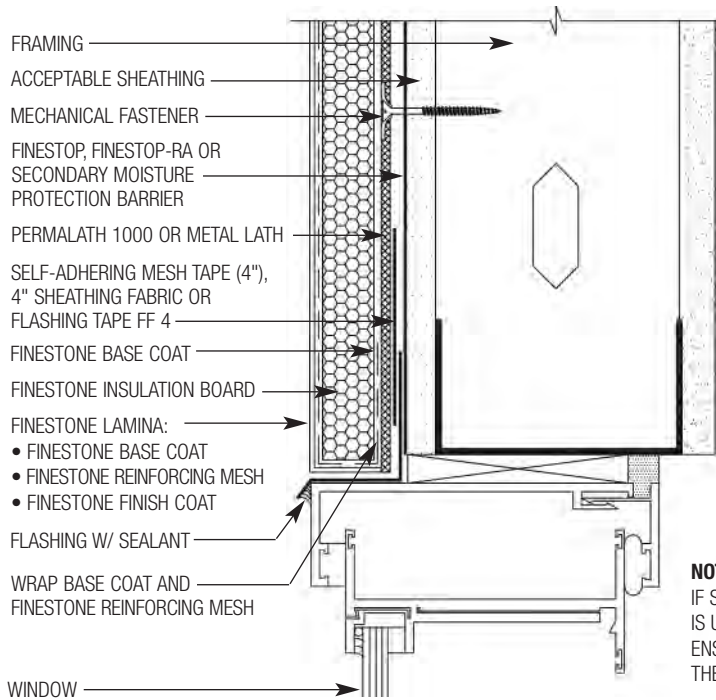
PDT-02 TYPICAL PEBBLETEX-D10 DESIGN (ISOMETRIC VIEW)



PDT-03 TYPICAL AESTHETIC GROOVE

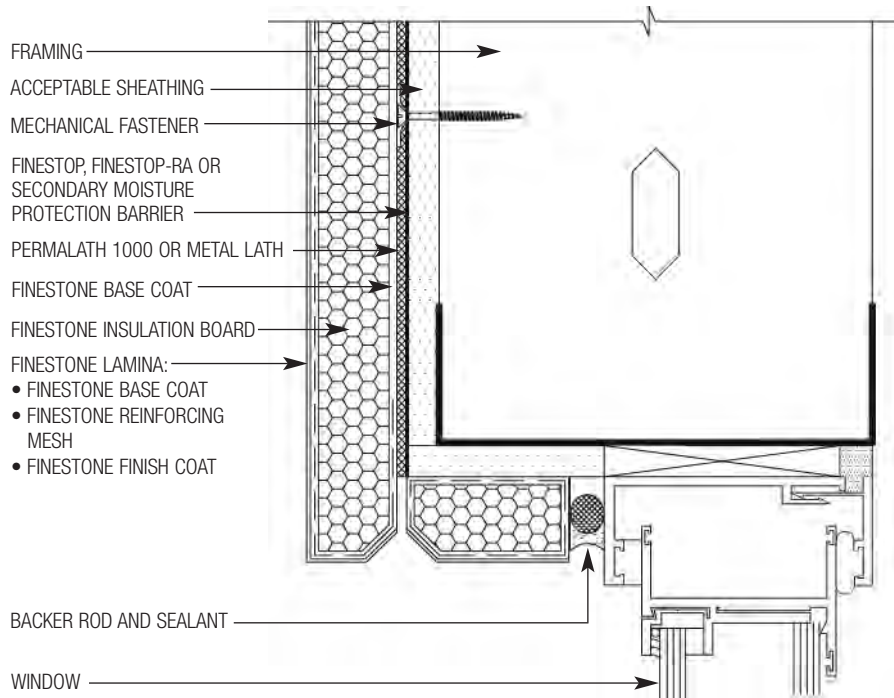


PDT-04 TYPICAL INSULATION BOARDS/REINFORCING MESH APPLICATION AT OPENINGS

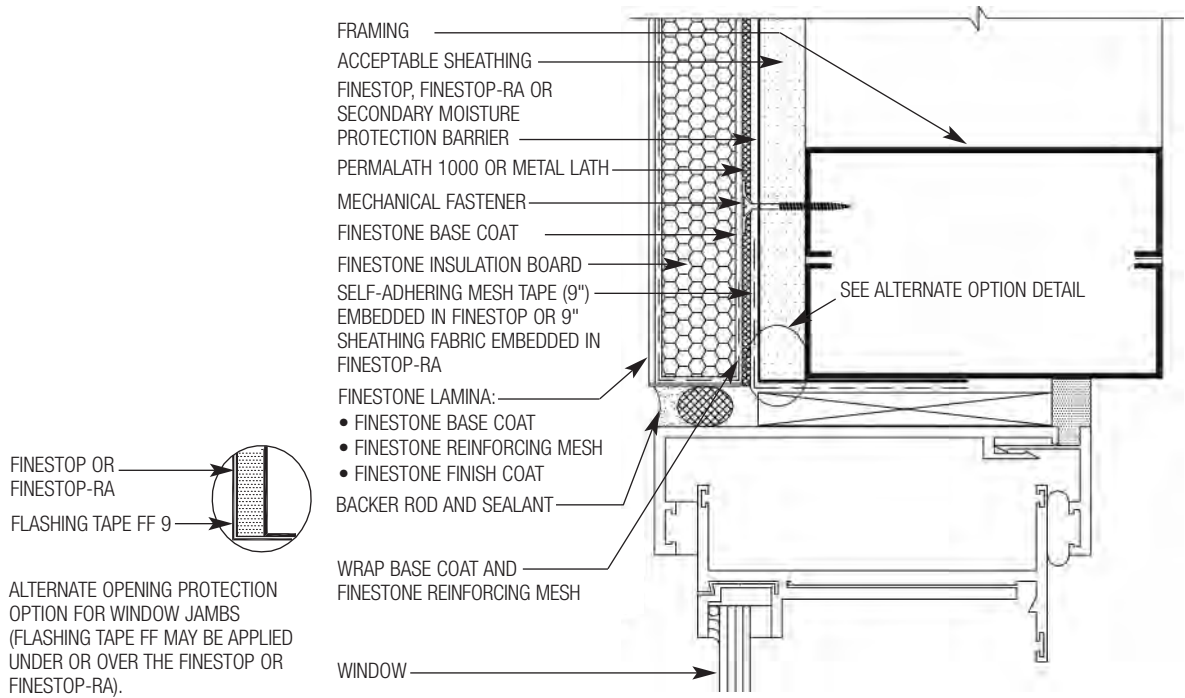


NOTE:
IF SECONDARY MOISTURE PROTECTION BARRIER IS USED IN LIEU OF FINESTOP OR FINESTOP-RA, ENSURE BARRIER IS PROPERLY LAPPED OVER THE FLASHING FLANGE.

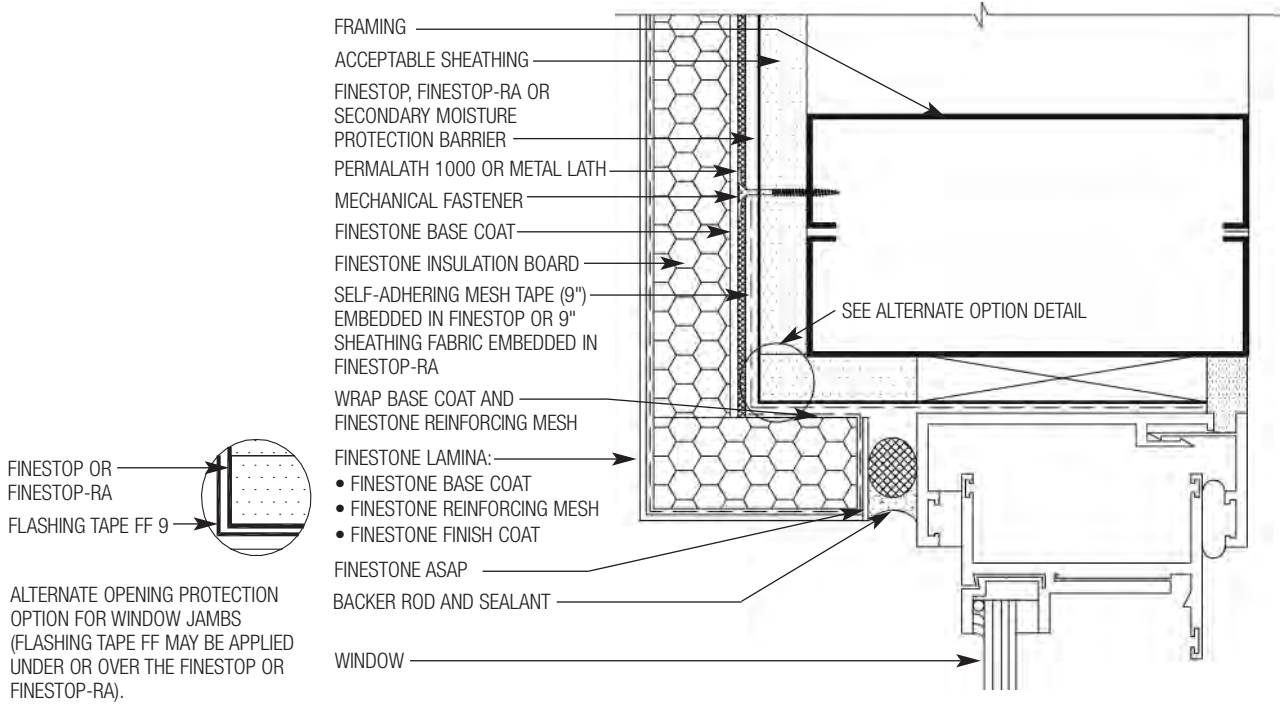
PDT-05 TYPICAL WINDOW HEAD (FLUSH)



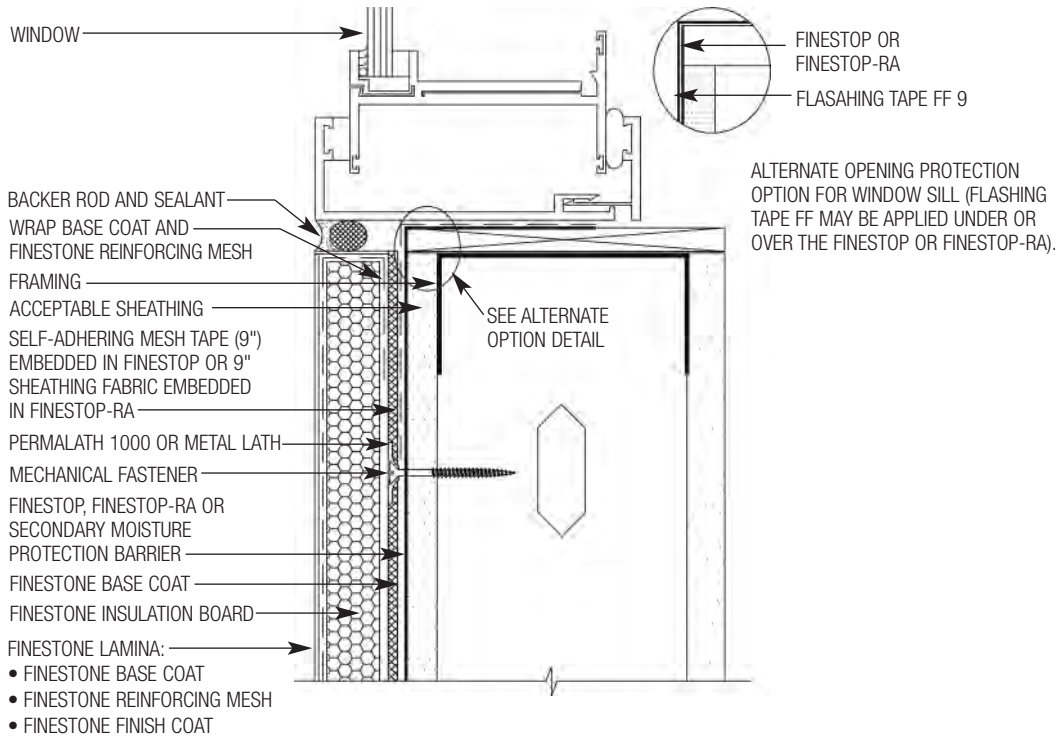
PDT-06 TYPICAL WINDOW HEAD (RECESSED)



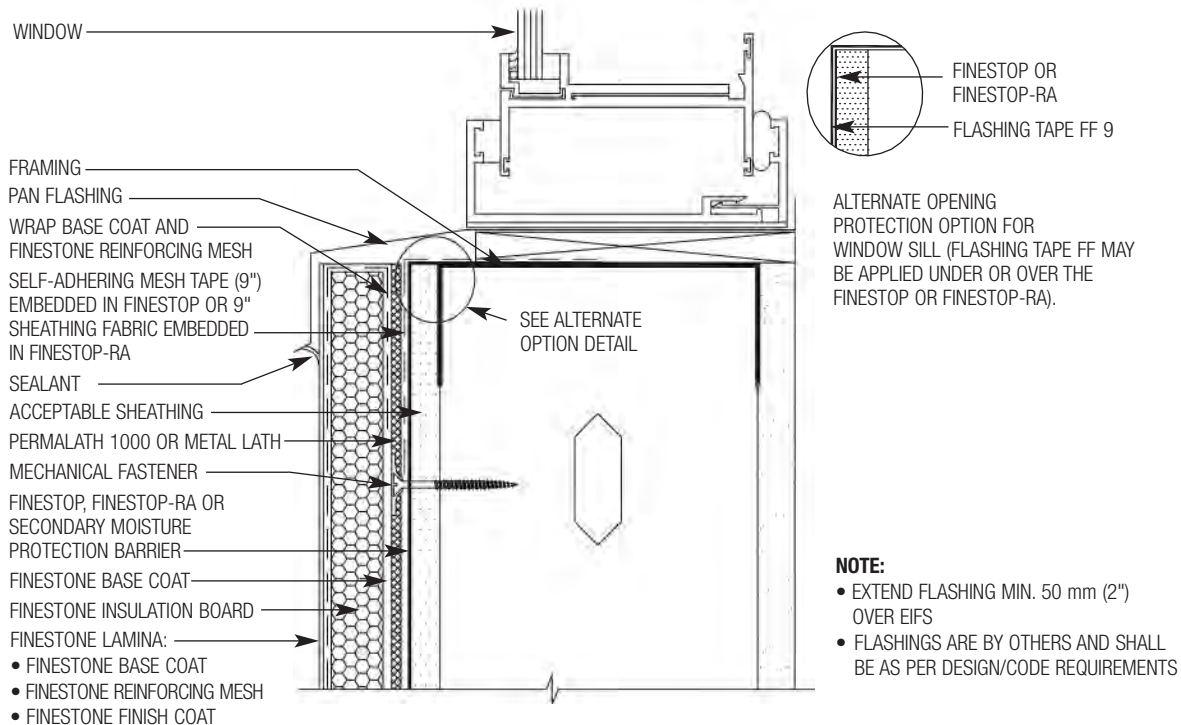
PDT-07 TYPICAL WINDOW JAMB DETAIL (FLUSH)



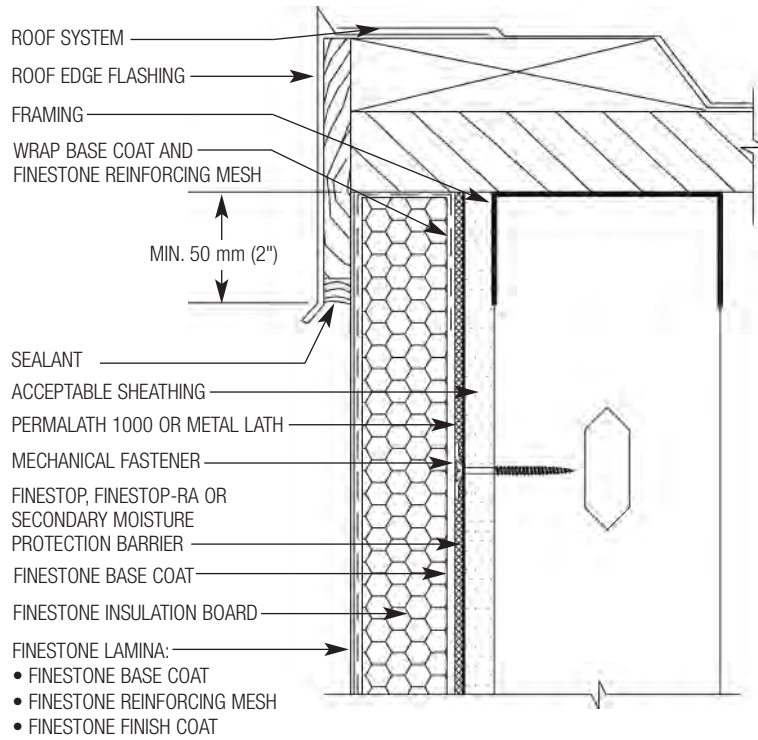
PDT-08 TYPICAL WINDOW JAMB DETAIL (RECESSED)



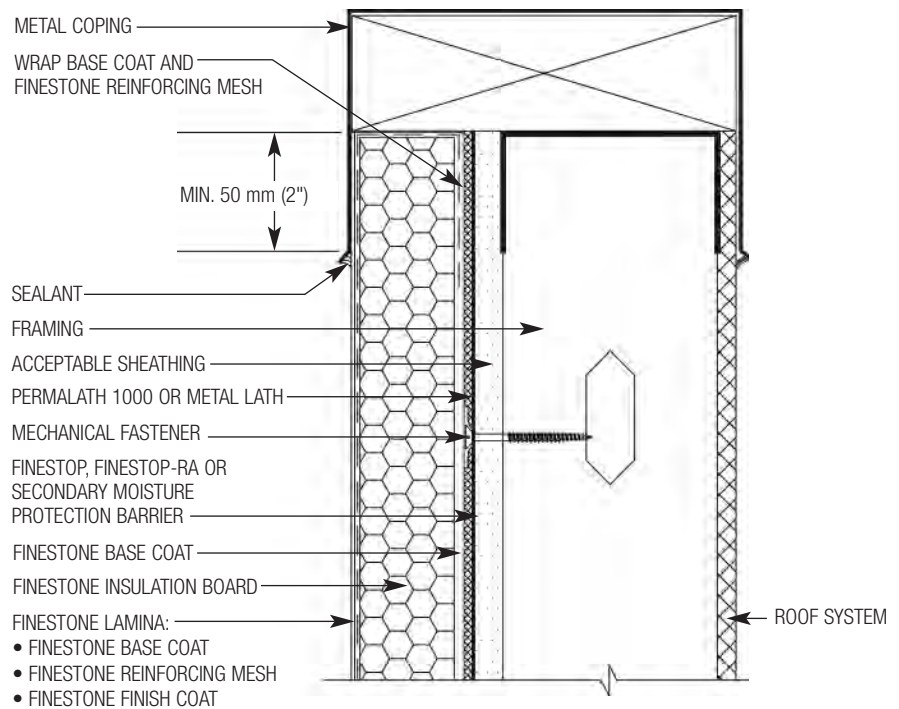
PDT-09 TYPICAL SILL DETAIL (FLUSH)



PDT-10 TYPICAL SILL DETAIL (RECESSED)



PDT-11 TYPICAL ROOF EDGE FLASHING DETAIL

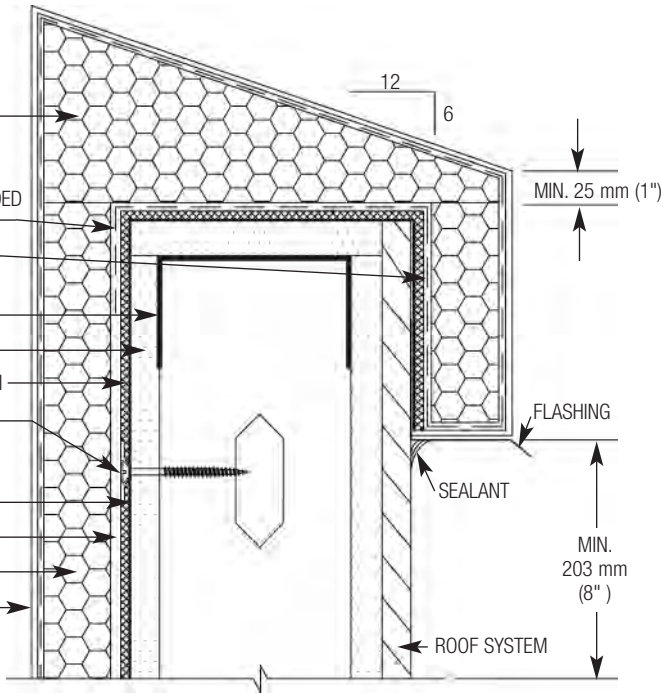


PDT-12 TYPICAL METAL COPING DETAIL

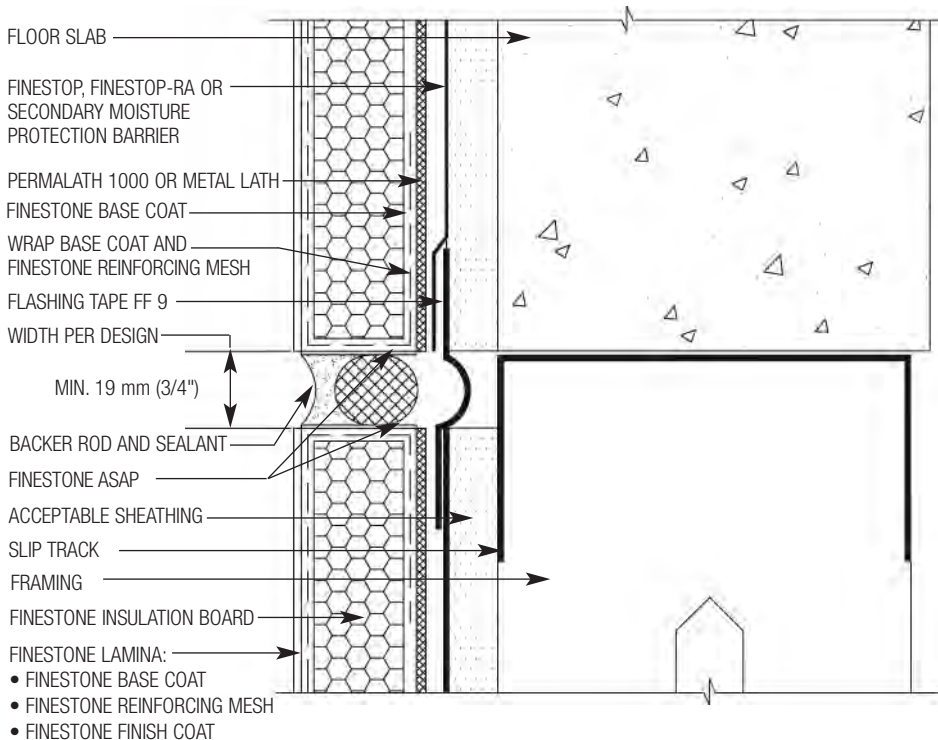
NOTE:

FLASHINGS ARE BY OTHERS AND SHALL BE AS PER DESIGN/CODE REQUIREMENTS

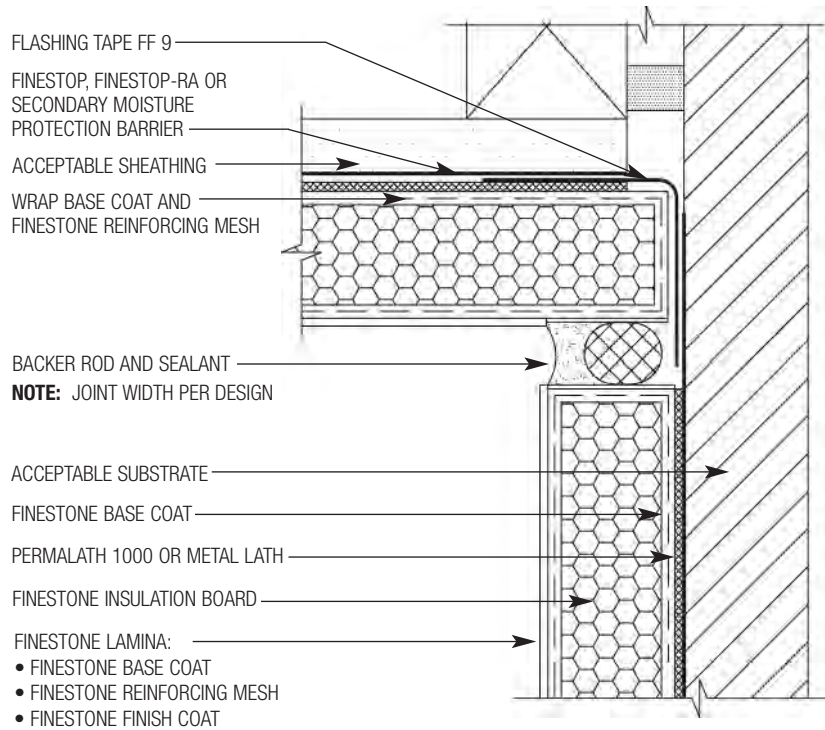
- EPS CAP
- SELF-ADHERING MESH TAPE (9") EMBEDDED IN FINESTOP OR 9" SHEATHING FABRIC EMBEDDED IN FINESTOP-RA
- WRAP BASE COAT AND FINESTONE REINFORCING MESH
- FRAMING
- ACCEPTABLE SHEATHING
- PERMALATH 1000 OR METAL LATH
- MECHANICAL FASTENER
- FINESTOP, FINESTOP-RA OR SECONDARY MOISTURE PROTECTION BARRIER
- FINESTONE BASE COAT
- FINESTONE INSULATION BOARD
- FINESTONE LAMINA:
 - FINESTONE BASE COAT
 - FINESTONE REINFORCING MESH
 - FINESTONE FINISH COAT



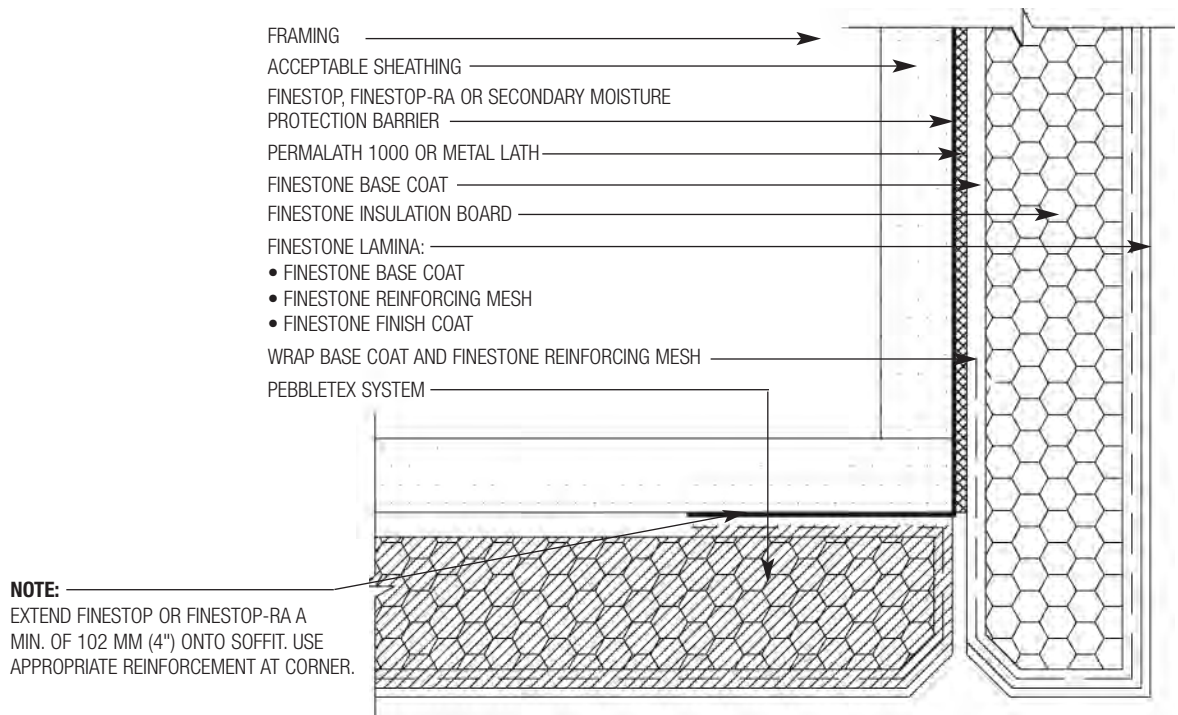
PDT-13 TYPICAL PARAPET CAP DETAIL



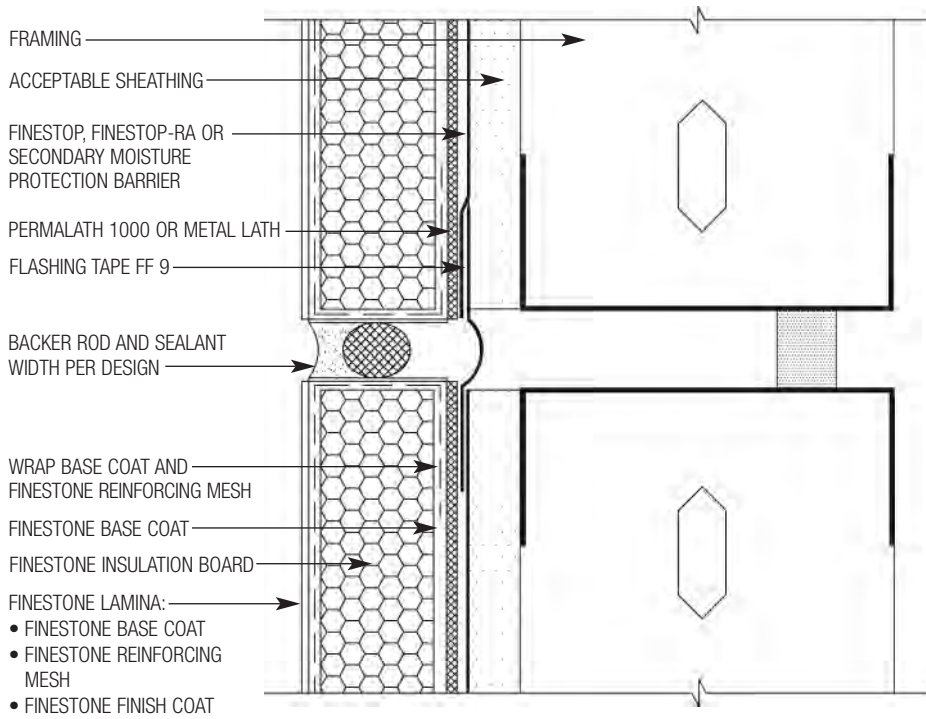
PDT-14 TYPICAL EXPANSION JOINT DETAIL AT FLOORLINE



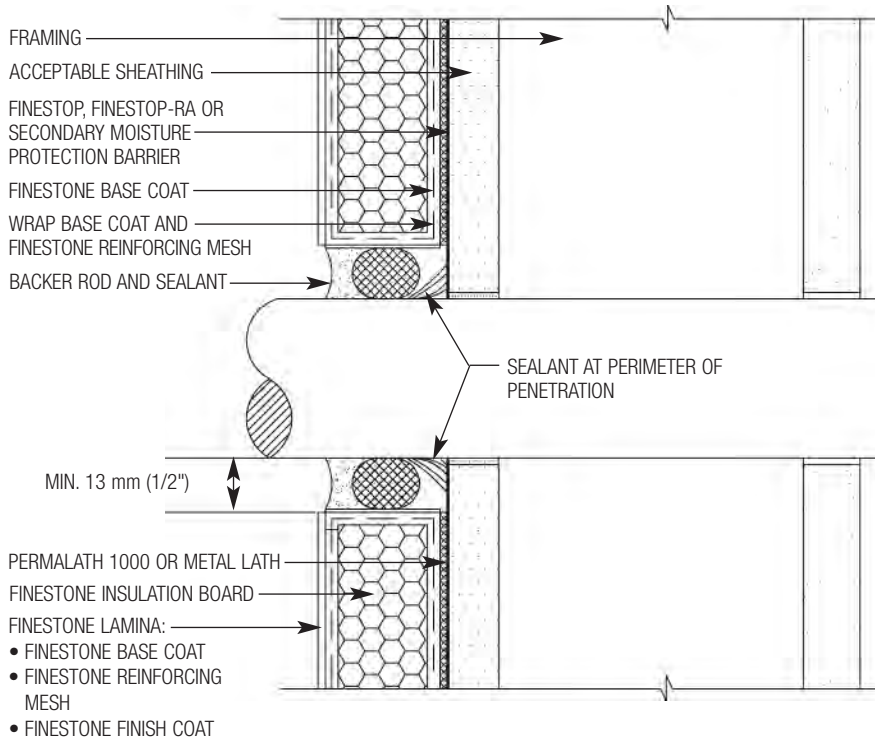
PDT-15 TYPICAL EXPANSION JOINT AT CHANGE IN SUBSTRATE



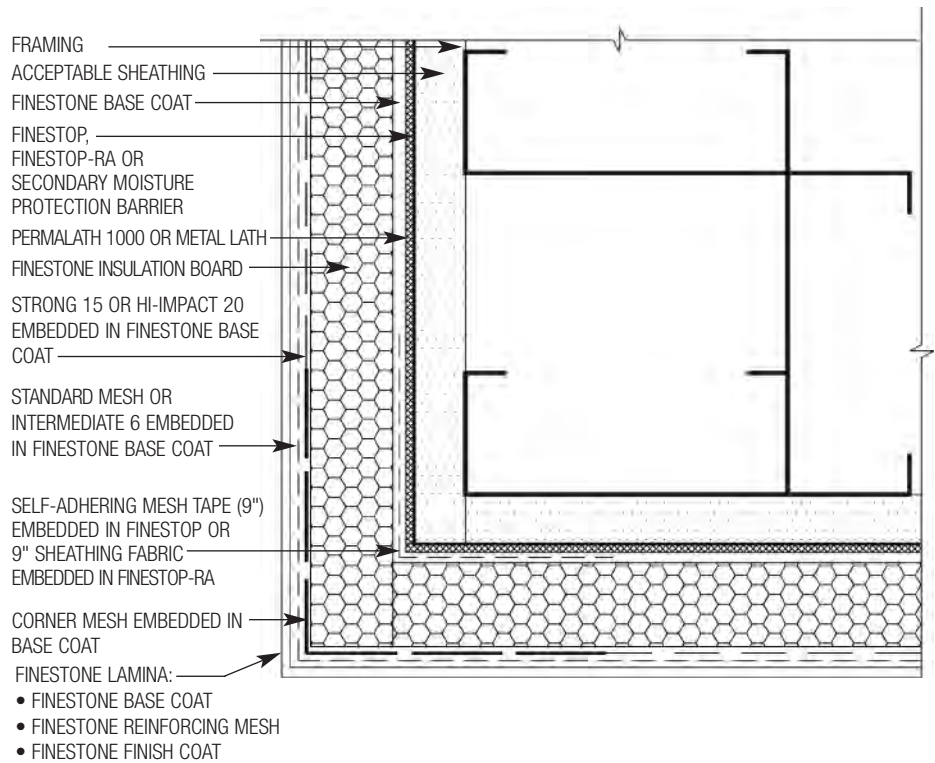
PDT-16 TYPICAL SECTION AT FASCIA/SOFFIT



PDT-17 TYPICAL EXPANSION JOINT DETAIL



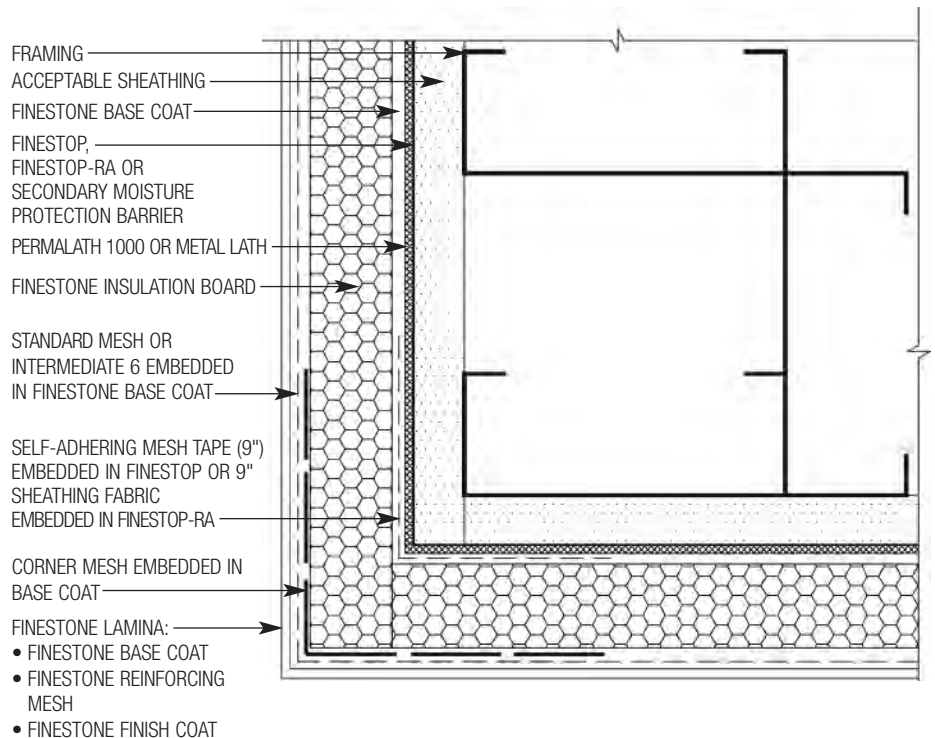
PDT-18 TYPICAL PIPE PENETRATION



NOTE:

- BUTT EDGE OF STRONG 15 OR HI-IMPACT 20 TO CORNER MESH
- A CONTINUOUS OVERLAY OF STANDARD MESH OR INTERMEDIATE 6 IS REQUIRED OVER STRONG 15, HI-IMPACT 20 OR CORNER MESH.

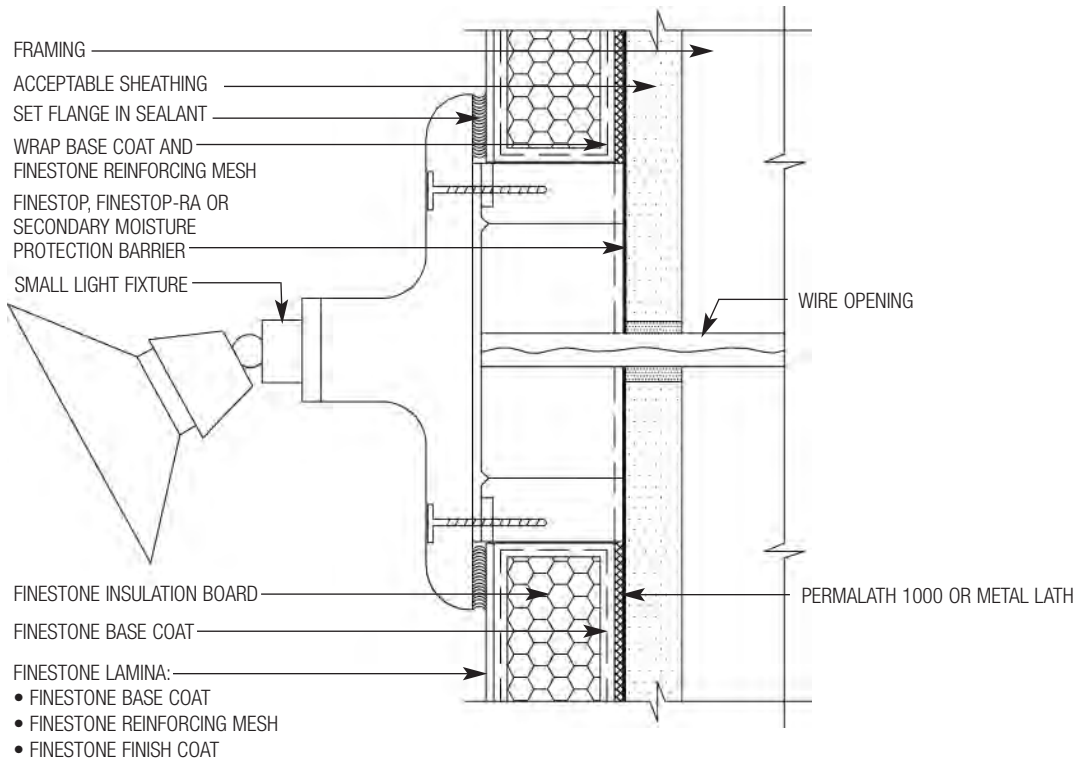
PDT-19 TYPICAL CORNER MESH APPLICATION WITH STRONG 15 OR HI-IMPACT 20 (PLAN VIEW)



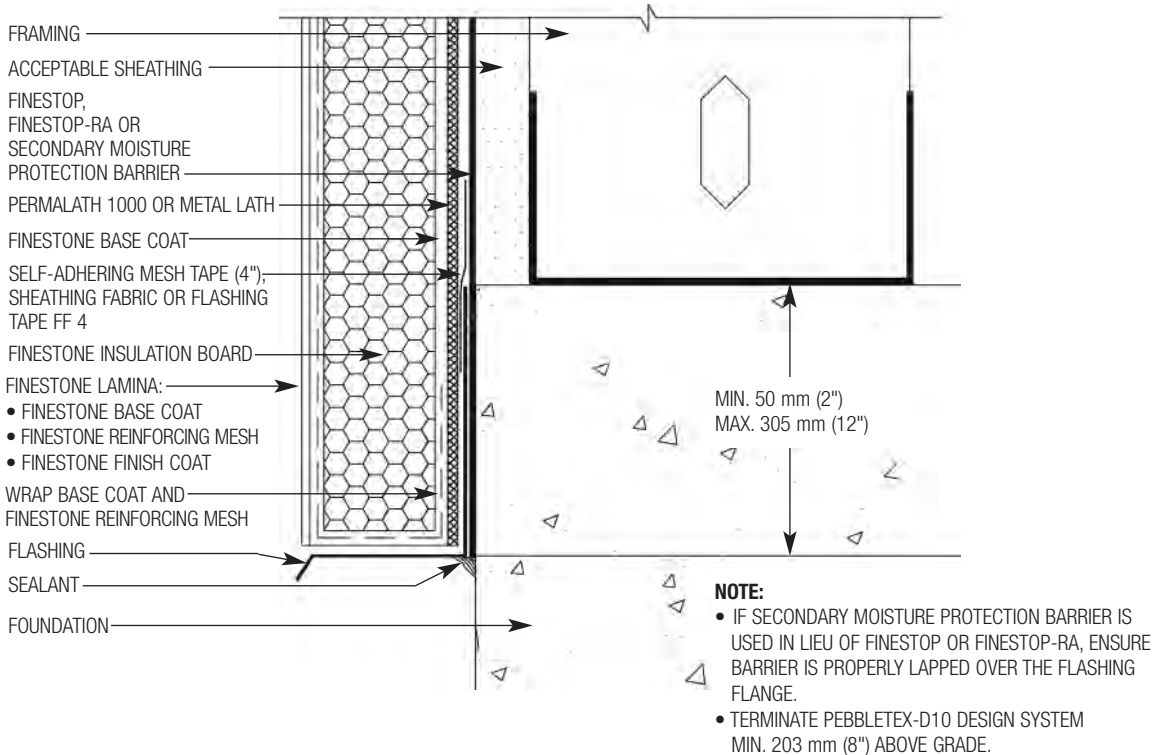
NOTE:

- A CONTINUOUS OVERLAY OF STANDARD MESH INTERMEDIATE 6 OR 12 IS REQUIRED OVER CORNER MESH.

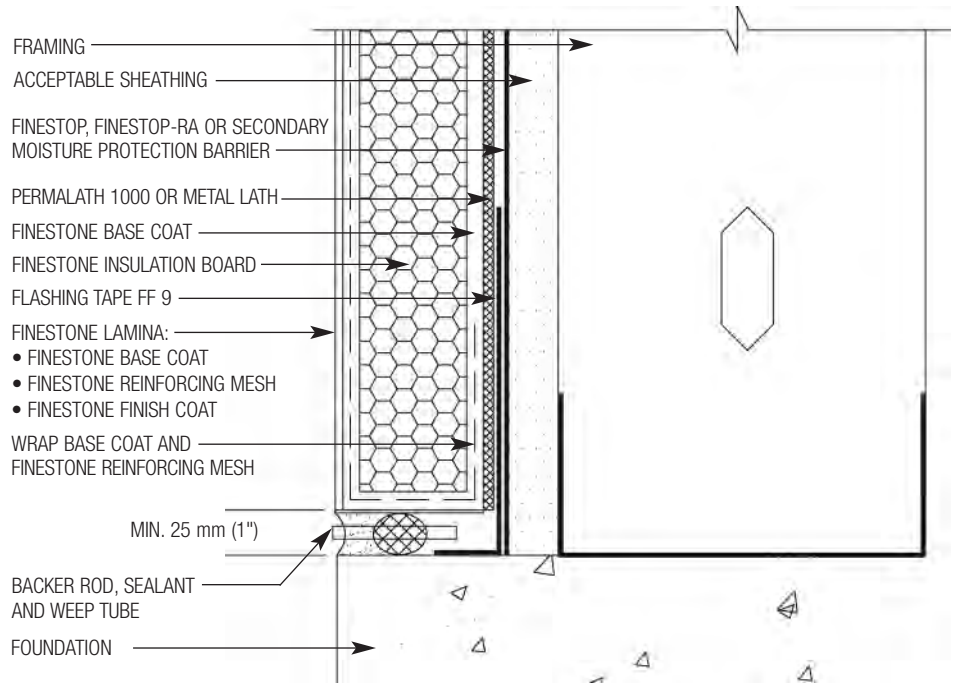
PDT-20 TYPICAL CORNER MESH APPLICATION WITH STANDARD MESH, INTERMEDIATE 6 OR INTERMEDIATE 12 (PLAN VIEW)



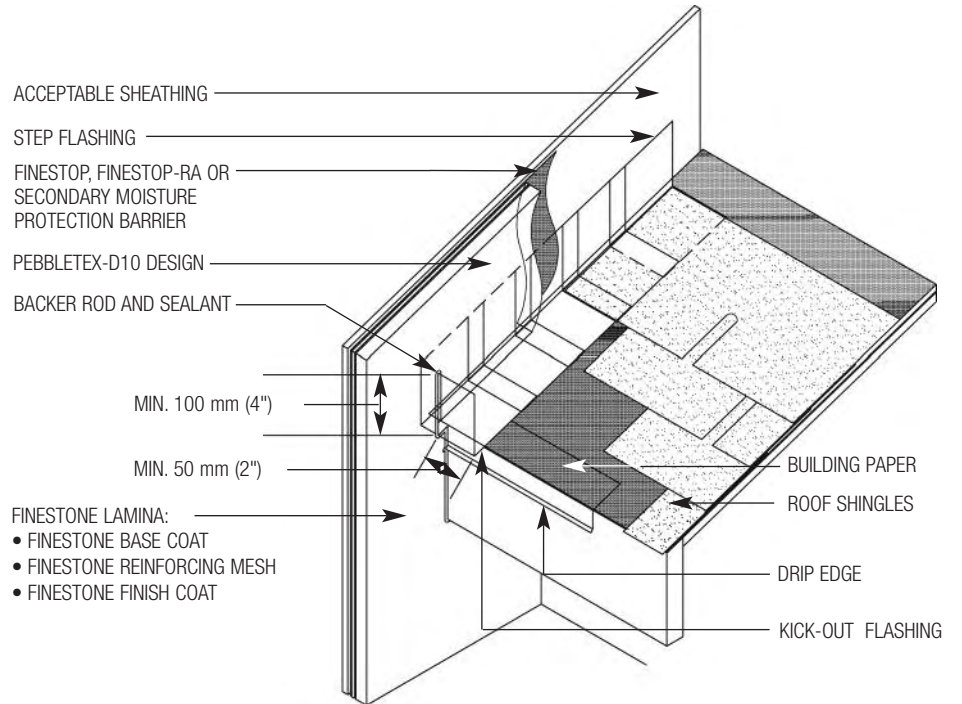
PDT-21 TYPICAL LIGHT FIXTURE



PDT-22 TYPICAL TERMINATION AT FOUNDATION



PDT-23 TYPICAL TERMINATION AT FOUNDATION (FLUSH)



NOTE:

- KICK-OUT FLASHING MUST BE ANGLED 100° MIN. TO ALLOW FOR PROPER DRAINAGE.
- KICK-OUT FLASHING SEAMS MUST BE SOLDERED OR SEALED WITH APPROPRIATE SEALANT.
- TERMINATE PEBBLETEX-D10 DESIGN MIN. 50 MM (2") ABOVE ROOF.

PDT-24 TYPICAL KICK-OUT FLASHING DETAIL

NOTES

GENERAL NOTES

BASF Wall Systems is an operating unit of BASF Construction Chemicals, LLC. (hereinafter referred to as "BASF Wall Systems") These details are presented in good faith by BASF Wall Systems and represent typical and/or general conditions. They are offered as a guide for consideration to assist the designer, specifier, installer and/or owner. The responsibility remains with the user for the design of any system. For conditions not shown, consult BASF Wall Systems for specific recommendations. Consult current FINESTONE technical bulletins for such information as acceptable sealants, insulation attachment methods, installation of air/weather barriers, residential policy, code and test reports, geo-climatic considerations, etc. Installation requirements for sealant (joint size configuration, primers, bond breakers) shall be in accordance with sealant manufacturer's specifications and instructions.

TECHNICAL SUPPORT

Consult the BASF Wall Systems Technical Services Department for specific recommendations concerning all other applications. Consult the FINESTONE website, www.finestone.basf.com, for additional information about products and systems and for updated literature.

RESIDENTIAL POLICY

On one- and two-family residential framed construction, BASF Wall Systems requires that the wall system selected be one that includes provisions for moisture drainage. The choices include Pebbletex D line of drainage EIFS, FINESTONE Stucco Systems and Finescreen Cement Board Stucco Systems. There are no exceptions to this policy. Under no circumstances will FINESTONE warrant the use of any other system on this type of construction without expressed written authorization from FINESTONE. [Residential construction using EIFS on masonry (CMU) or poured concrete does not require the additional water management provisions described above.] Consult BASF Wall Systems' Technical Service Department for specific recommendations concerning all other applications.

DISCLAIMER

This information and all further technical advice are based on BASF Wall Systems' present knowledge and experience. However, BASF assumes no liability for providing such information and advice including the extent to which such information and advice may relate to existing third party intellectual property rights, especially patent rights. In particular, BASF Wall Systems disclaims any and all CONDITIONS AND WARRANTIES, WHETHER EXPRESS OR IMPLIED, INCLUDING THE IMPLIED WARRANTIES OF FITNESS FOR A PARTICULAR PURPOSE OR MERCHANTABILITY. BASF WALL SYSTEMS SHALL NOT BE RESPONSIBLE FOR CONSEQUENTIAL, INDIRECT OR INCIDENTAL DAMAGES (INCLUDING LOSS OF PROFITS) OF ANY KIND. BASF Wall Systems reserves the right to make any changes according to technological progress or further developments. It is the customer's responsibility and obligation to carefully inspect and test any incoming goods. Performance of the product(s) described herein should be verified by testing and carried out only by qualified experts. It is the sole responsibility of the customer to carry out and arrange for any such testing. Reference to trade names used by other companies is neither a recommendation, nor an endorsement of any product and does not imply that similar products could not be used.

BASF Wall Systems

3550 St. Johns Bluff Road South
Jacksonville, FL 32224-2614
Phone 800 • 221 • 9255
Fax 904 • 996 • 6300
www.finestone.basf.com