

SEALANT AND WALL SYSTEM WARRANTY



The marriage of a Finestone wall system and a high performance Sonneborn[®] Sealant represents a giant leap toward integrating the entire building envelope. This program from BASF is defined by quality components and solid warranties, yielding the piece of mind you need.

SEALANT AND WALL SYSTEM WARRANTY

FEATURES	ADVANTAGES
<ul style="list-style-type: none">• Very low modulus	Extreme joint movement capability (+100 to -50), Seals EIFS joints with little stress, Excellent flexibility for keeping moving joints weather tight
<ul style="list-style-type: none">• Easy to gun and tool	Speeds application; neater joints
<ul style="list-style-type: none">• 13 standard colors; Earth-tone color palette	Close match to popular colors
<ul style="list-style-type: none">• One component	No mixing; less labor
<ul style="list-style-type: none">• Weather resistant	Long lasting weather-tight seal
<ul style="list-style-type: none">• Wide temperature application range	Suitable for all climates
<ul style="list-style-type: none">• Compatible with non-rigid paints	Can be painted without long delays
<ul style="list-style-type: none">• Non-staining	May be used where stone abuts the Finestone wall system
<ul style="list-style-type: none">• No static dirt pick-up	Better looking buildings
<ul style="list-style-type: none">• Mildew resistant	Does not support mildew growth

SINGLE SOURCE—PEACE OF MIND

Who else but BASF can give you the peace of mind that comes with a true single-source warranty for the wall cladding and critical sealants? BASF, the world's largest chemical company, manufactures many recognizable and long-trusted brands such as Master Builders, Thoro®, and of course Sonneborn® and Finestone®. BASF can leverage the advantages of shared ownership and two technical departments working together from design through completion to offer the Finestone® Wall Systems Sealant Warranty. This warranty program represents a bold step that pushes the envelope in commercial building protection for owners and architects.

Expansion joints and wall claddings constitute a small percentage of a construction budget, yet they perform some of the most critical roles in all of construction. The design of the joint, the performance of the sealant and cladding, and the compatibility between the sealant and adjacent materials are all vitally critical issues.

By choosing to design and build with Sonneborn's Sonolastic® 150 with VLM Technology and a Finestone wall system, you will have taken a major step toward greater quality assurance. By specifying this powerful combination, you will enjoy benefits that include:

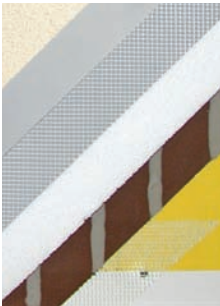
- Consistently high-quality BASF manufactured sealant and wall system components
- Technical support that is consistent for cladding and sealant questions
- Consistent specifications and details
- Simplified resolution of construction issues
- Compatible components—predictable performance

**FINESTONE SEALANT AND WALL
SYSTEM WARRANTY**

PRODUCT BULLETIN **1030967**

A SYSTEM FOR EVERY DESIGN

From stucco to Class PB EIFS design to technically advanced water-managed systems, choose the wall system that best meets your project needs. The wide variety of design options provide optimal solutions whether you are building low rise or high rise, new or renovation, in high-traffic or remote areas, in the rain forest or the desert. The tremendous design flexibility, color and texture selection, integral shapes, speed of construction and reliable performance have made EIFS, stucco and Acrylic Surfacing Systems the best values available to commercial construction. Now, with the addition of BASF's unmatched true single source cladding & sealant warranty, Finestone's are clearly the superior values in wall systems.



Pebbletex-DCA



Stucco Systems



Pebbletex



*Finestone Textured Acrylic
Surfacing Systems for ICFs*

VLM TECHNOLOGY—IDEAL FOR EIFS

Sonolastic 150 with VLM technology represents the next generation in sealants. Engineered especially for EIFS and based on silyl-terminated polyether technology, Sonolastic 150 with VLM Technology combines the best properties of polyurethane and silicone sealants: long-lasting watertight seals, superior flexibility, and maximum joint movement capability. In addition, unlike conventional silicone sealants, Sonolastic 150 VLM can be painted, and is fast-curing, non-staining, and resistant to dirt pickup. The sealant and wall systems are appropriate for all climates and environments—from urban centers to the seacoast.

All Finestone® systems used in commercial construction in the USA and Canada are eligible for the Finestone Wall Systems Sealant Warranty.

OBTAINING THE WARRANTY

The combination of Finestone wall systems and Sonolastic® 150 with VLM Technology used on commercial projects qualify for the warranty. To obtain the warranty, the Wall System subcontractor must complete a simple warranty request for the completed work. Likewise, the sealant subcontractor must complete equally quick paperwork. Both forms are available from the Finestone distributor or by calling BASF Wall Systems at 800-221-9255. Once the completed forms are received by BASF Wall Systems, a warranty will be issued to the owner.

Residential Policy

On one- and two-family residential framed construction, FINESTONE requires that the wall system selected be one that includes provisions for moisture drainage. The choices include Pebbletex D line of drainage EIFS, FINESTONE Stucco Systems and Finescreen Cement Board Stucco Systems. There are no exceptions to this policy. Under no circumstances will FINESTONE warrant the use of any other system on this type of construction without expressed written authorization from FINESTONE. [Residential construction using EIFS on masonry (CMU) or poured concrete does not require the additional water management provisions described above.] Consult FINESTONE Technical Service Department for specific recommendations concerning all other applications.

Disclaimer

This information and all further technical advice are based on BASF's present knowledge and experience. However, BASF assumes no liability for providing such information and advice including the extent to which such information and advice may relate to existing third party intellectual property rights, especially patent rights. In particular, BASF disclaims all CONDITIONS AND WARRANTIES, WHETHER EXPRESS OR IMPLIED, INCLUDING THE IMPLIED WARRANTIES OF FITNESS FOR A PARTICULAR PURPOSE OR MERCHANTABILITY. BASF SHALL NOT BE RESPONSIBLE FOR CONSEQUENTIAL, INDIRECT OR INCIDENTAL DAMAGES (INCLUDING LOSS OF PROFITS) OF ANY KIND. BASF reserves the right to make any changes according to technological progress or further developments. It is the customer's responsibility and obligation to carefully inspect and test any incoming goods. Performance of the product(s) described herein should be verified by testing and carried out only by qualified experts. It is the sole responsibility of the customer to carry out and arrange for any such testing. Reference to trade names used by other companies is neither a recommendation, nor an endorsement of any product and does not imply that similar products could not be used.

BASF Wall Systems

3550 St. Johns Bluff Road South
Jacksonville, FL 32224-2614
Phone 800 • 221 • 9255
Fax 904 • 996 • 6300
www.finestone.cc